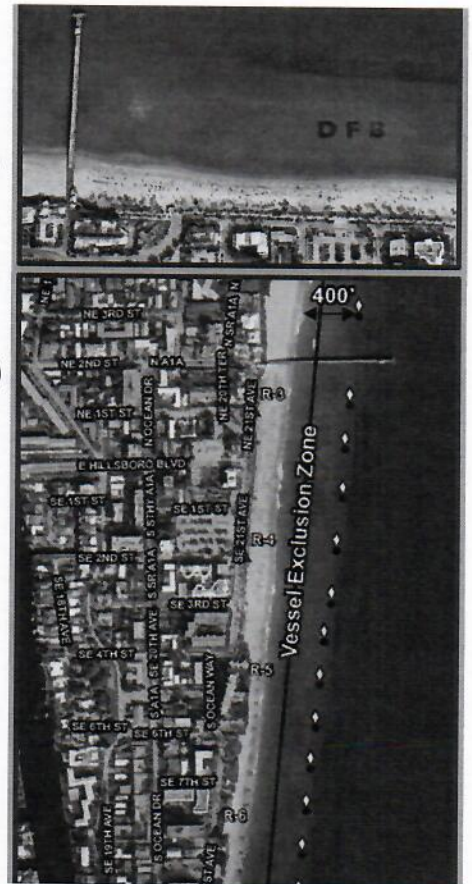
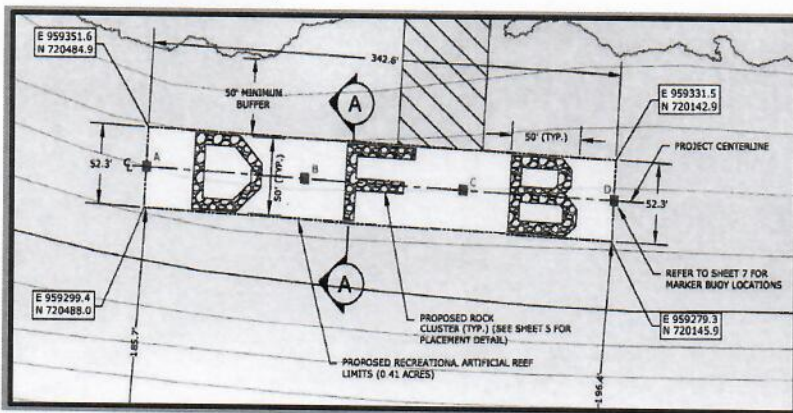


# DEERFIELD BEACH ARTIFICIAL REEF

# Project Description

- Three clusters of limestone boulders, each measuring 50 feet by 50 feet
- Approximately 200 feet offshore making it accessible from land
- In water depth of approximately 8-10 feet
- Located within already constructed Vessel Exclusion Zone (VEZ) for enhanced safety



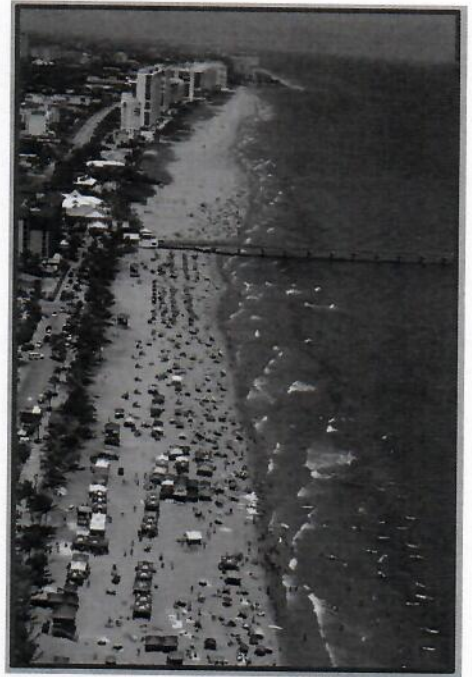
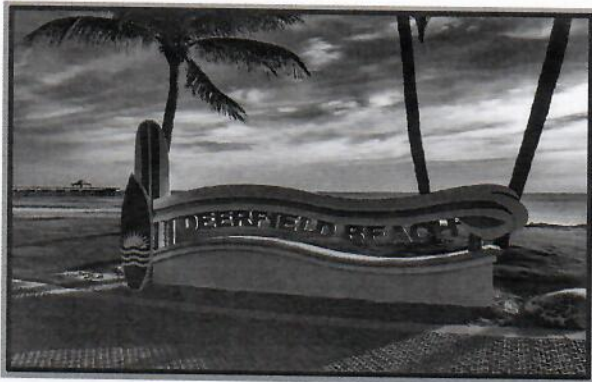
# Benefits of Artificial Reefs

- Reduces pressure from natural reefs
- Increased economic activity (Studies indicate 4 to 1 return on investment)
- Provides habitat for juvenile fish species
- Increases marine population
- Artificial reef-related expenditures generated \$961 million in sales and resulted in \$502 million in income to Broward County residents



# Deerfield Beach Tourism Statistics

- Approximately 3 million visitors annually
- Contributions of \$2.6 million annually to Tourist Development Council (TDC)
- Expanding residential and commercial development
- Consistent with City goal of marketing City/County as a Nautical Destination



# Exciting New Attraction for Broward County

- Provides safe recreational snorkeling experience with VEZ
- Promotes marine life
- Offers environmental education opportunities
- Facilitate reef-related research
- Reinvest TDC funds to promote tourism in County



# Funding Request

- \$200,000 City of Deerfield Beach Funds
- \$30,000 Grants funds awarded
- \$150,000 requested for construction and marketing



# Summary

- In line with TDC goals to promote tourism in the region
- City has contributed significant funds to TDC over the last 14 years (\$26,000,000)
- Unique project for the County
- Provides recreational and educational opportunities

