

1 RESOLUTION NO. 2019-

2 A RESOLUTION OF THE BOARD OF COUNTY
3 COMMISSIONERS OF BROWARD COUNTY, FLORIDA, TO
4 AUTHORIZE PUBLIC HEARING TO VACATE A 10-FOOT
5 UTILITY EASEMENT, 20-FOOT CANAL MAINTENANCE
6 EASEMENT, AND 40-FOOT CANAL EASEMENT, ALL
7 LYING WITHIN TRACT A OF THE ANDREAS-CRÈME, INC.
8 PLAT (PLAT BOOK 159, PAGE 23) AND DIRECTING THE
9 CLERK TO PUBLISH NOTICE OF SUCH HEARING;
10 VACATION PETITION NO. 2017-V-02.

11 WHEREAS, it has been requested that the Board of County Commissioners of
12 Broward County, Florida ("Board"), vacate, abandon, discontinue, and close a 10-foot
13 utility easement, 20-foot canal maintenance easement, and 40-foot canal easement, all
14 lying within Tract A of the Andreas-Crème Inc. Plat, as recorded in Plat Book 159, Page
15 23 of the Public Records of Broward County and is located at 751 Southwest 121 Avenue
16 in the Town of Davie, said lands situate, being and lying in Broward County, Florida,
17 described as follows:

18 Sketch and legal descriptions attached hereto and made a part hereof as
19 Exhibit A

20 WHEREAS, pursuant to Section 25, Broward Administrative Code, this Board is
21 required to hold a Public hearing before said property may be vacated, abandoned and
22 closed, NOW, THEREFORE,

23 BE IT RESOLVED by the Board that a Public Hearing shall be held at 10:00 A.M.,
24 on Tuesday, August 13, 2019, in Room 422 of the Broward County Governmental Center

1 located at 115 South Andrews Avenue, Fort Lauderdale, Florida, to consider the vacation
2 and abandonment of this property.

3

4 BE IT FURTHER RESOLVED that the Clerk of this Board be and is hereby
5 authorized and directed to publish said notice of Public hearing in the Fort Lauderdale
6 Sun-Sentinel newspaper at least two (2) weeks prior to said date, inviting interested
7 persons to appear and be heard at the place and time herein specified.

8

9 ADOPTED this ____ day of _____, 2019.

10

11

12

13

14

15

16

17

18

19

20

21

22

23

24

Coding: Words in ~~struck-through~~ type are deletions from existing text. Words in underscoring type are additions.



CRAVEN • THOMPSON & ASSOCIATES, INC.
ENGINEERS • PLANNERS • SURVEYORS

3563 N.W. 53RD STREET FORT LAUDERDALE, FLORIDA 33309 (954) 739-6400

FAX: (954) 739-6409

FOR: AECOM

NOTE: THIS IS NOT A SKETCH OF SURVEY, but only a graphic depiction of the description shown hereon. There has been no field work, viewing of the subject property, or monuments set in connection with the preparation of the information shown hereon.

**SKETCH AND DESCRIPTION
 VACATION OF 10' UTILITY EASEMENT**

ABBREVIATION LEGEND

- B.C.R. BROWARD COUNTY RECORDS
- F.D.O.T. FLORIDA DEPARTMENT OF TRANSPORTATION
- O.R.B. OFFICIAL RECORDS BOOK
- P.B. PLAT BOOK
- PG. PAGE
- R/W RIGHT-OF-WAY
- ///// NON-VEHICULAR ACCESS LINE PER PLAT

SURVEYOR'S NOTES:

BEARINGS SHOWN HEREON ARE BASED ON EAST LINE OF TRACT "A", "ANDREAS-CREME INC. PLAT", ACCORDING TO THE PLAT THEREOF AS RECORDED IN PLAT BOOK 159, PAGE 23, OF THE PUBLIC RECORDED OF BROWARD COUNTY, FLORIDA. SAID EAST LINE BEARS SOUTH 00°08'33" EAST

DESCRIPTION:

THE WEST 10.00 FEET OF THE EAST 95.00 FEET OF TRACT "A", LESS THE NORTH 10.00 FEET THEREOF, AND LESS THE SOUTH 10.00 FEET THEREOF, ANDREAS-CREME INC. PLAT, ACCORDING TO THE PLAT THEREOF AS RECORDED IN PLAT BOOK 159, PAGE 23 OF THE PUBLIC RECORDS OF BROWARD COUNTY, FLORIDA.

SAID LANDS SITUATE, LYING AND BEING IN THE TOWN OF DAVIE, BROWARD COUNTY, FLORIDA AND CONTAINING 6,790 SQUARE FEET OR 0.156 ACRES MORE OR LESS.

CERTIFICATE:

WE HEREBY CERTIFY THAT THIS SKETCH AND DESCRIPTION CONFORMS TO CHAPTER 5J-17, (FLORIDA ADMINISTRATIVE CODE), AS ADOPTED BY THE DEPARTMENT OF AGRICULTURE AND CONSUMER SERVICES, BOARD OF PROFESSIONAL SURVEYORS AND MAPPERS IN SEPTEMBER, 1981, AS AMENDED, PURSUANT TO CHAPTER 472.027 OF THE FLORIDA STATUTES, AND IS TRUE AND CORRECT TO THE BEST OF MY KNOWLEDGE AND BELIEF.

CRAVEN THOMPSON & ASSOCIATES, INC.
 CERTIFICATE OF AUTHORIZATION NO. LB271

Thomas C. Shahan
 THOMAS C. SHAHAN-FOR THE FIRM
 PROFESSIONAL SURVEYOR AND MAPPER NO. 4387
 STATE OF FLORIDA

THIS SKETCH AND DESCRIPTION OR COPIES THEREOF ARE NOT VALID WITHOUT THE SIGNATURE AND ORIGINAL RAISED SEAL OR A UNIQUE ELECTRONIC SIGNATURE OF A FLORIDA LICENSED PROFESSIONAL SURVEYOR AND MAPPER UNDER CHAPTER RULES 5J-17.061 & 5J-17.062 FLORIDA ADMINISTRATIVE CODE.

SHEET 1 OF 3 SHEETS

UPDATES and/or REVISIONS	DATE	BY	CK'D
REVISIONS PER COMMENTS	02/22/17	T.S.	C.D.
REVISIONS PER COMMENTS	04/26/17	T.S.	C.D.

NOTE The undersigned and CRAVEN-THOMPSON & ASSOCIATES, INC. make no representations or guarantees as to the information reflected hereon pertaining to easements, rights-of-way, set back lines, reservations, agreements and other similar matters, and further, this instrument is not intended to reflect or set forth all such matters. Such information should be obtained and confirmed by others through appropriate title verification.

NOTE Lands shown hereon were not abstracted for right-of-way and/or easements of record.

G: \2007\07-0108-CHILDRENS_CENTER\DWG\SD-VACATION OF UTILITY EASEMENTS.DWG

JOB NO.: 07-0108-001	DRAWN BY: T.S.	CHECKED BY: R.Y.	F.B.N/A	PG. N/A	DATED: 03-09-12
----------------------	----------------	------------------	---------	---------	-----------------



CRAVEN • THOMPSON & ASSOCIATES, INC.

ENGINEERS • PLANNERS • SURVEYORS

3563 N.W. 53RD STREET FORT LAUDERDALE, FLORIDA 33309 (954) 739-6400

FAX: (954) 739-6409

FOR: **AECOM**

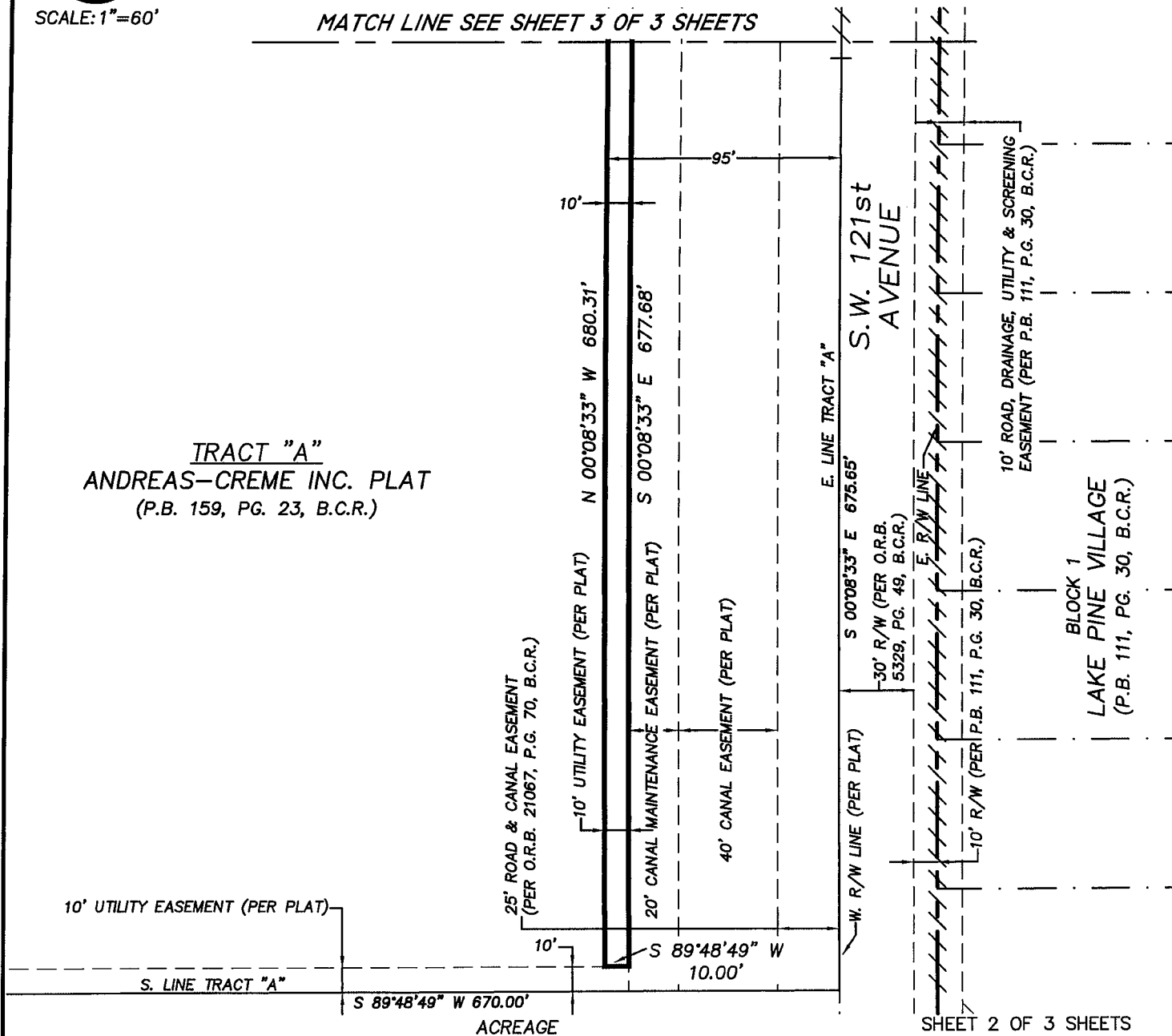


SCALE: 1"=60'

NOTE: THIS IS NOT A SKETCH OF SURVEY, but only a graphic depiction of the description shown hereon. There has been no field work, viewing of the subject property, or monuments set in connection with the preparation of the information shown hereon.

SKETCH AND DESCRIPTION

MATCH LINE SEE SHEET 3 OF 3 SHEETS



UPDATES and/or REVISIONS	DATE	BY	CK'D
REVISIONS PER COMMENTS	02/22/17	T.S.	C.D.
REVISIONS PER COMMENTS	04/26/17	T.S.	C.D.

NOTE The undersigned and CRAVEN-THOMPSON & ASSOCIATES, INC. make no representations or guarantees as to the information reflected hereon pertaining to easements, rights-of-way, set back lines, reservations, agreements and other similar matters, and further, this instrument is not intended to reflect or set forth all such matters. Such information should be obtained and confirmed by others through appropriate title verification.

NOTE Lands shown hereon were not abstracted for right-of-way and/or easements of record.

G:\2007\07-0108-CHILDRENS_CENTER\DWG\SD-VACATION OF UTILITY EASEMENTS.DWG



EXHIBIT 2
Page 6 of 6

CRAVEN • THOMPSON & ASSOCIATES, INC.
ENGINEERS • PLANNERS • SURVEYORS

3563 N.W. 53RD STREET FORT LAUDERDALE, FLORIDA 33309 (954) 739-6400

FAX: (954) 739-6409

FOR: AECOM

NOTE: THIS IS NOT A SKETCH OF SURVEY, but only a graphic depiction of the description shown hereon. There has been no field work, viewing of the subject property, or monuments set in connection with the preparation of the information shown hereon.

**SKETCH AND DESCRIPTION
20' CANAL MAINTENANCE EASEMENT**

ABBREVIATION LEGEND

B.C.R. BROWARD COUNTY RECORDS
 F.D.O.T. FLORIDA DEPARTMENT OF TRANSPORTATION
 O.R.B. OFFICIAL RECORDS BOOK
 P.B. PLAT BOOK
 PG. PAGE
 R/W RIGHT-OF-WAY
 ////////////// NON-VEHICULAR ACCESS LINE PER PLAT

SURVEYOR'S NOTES:

BEARINGS SHOWN HEREON ARE BASED ON EAST LINE OF TRACT "A", "ANDREAS-CREME INC. PLAT", ACCORDING TO THE PLAT THEREOF AS RECORDED IN PLAT BOOK 159, PAGE 23, OF THE PUBLIC RECORDED OF BROWARD COUNTY, FLORIDA. SAID EAST LINE BEARS SOUTH 00°08'33" EAST

DESCRIPTION:

THE WEST 20.00 FEET OF THE EAST 85.00 FEET OF TRACT "A", ANDREAS-CREME INC. PLAT, ACCORDING TO THE PLAT THEREOF AS RECORDED IN PLAT BOOK 159, PAGE 23 OF THE PUBLIC RECORDS OF BROWARD COUNTY, FLORIDA.

SAID LANDS SITUATE, LYING AND BEING IN THE TOWN OF DAVE, BROWARD COUNTY, FLORIDA AND CONTAINING 13,907 SQUARE FEET OR 0.319 ACRES MORE OR LESS.

CERTIFICATE:

WE HEREBY CERTIFY THAT THIS SKETCH AND DESCRIPTION CONFORMS TO CHAPTER 5J-17, (FLORIDA ADMINISTRATIVE CODE), AS ADOPTED BY THE DEPARTMENT OF AGRICULTURE AND CONSUMER SERVICES, BOARD OF PROFESSIONAL SURVEYORS AND MAPPERS IN SEPTEMBER, 1981, AS AMENDED, PURSUANT TO CHAPTER 472.027 OF THE FLORIDA STATUTES, AND IS TRUE AND CORRECT TO THE BEST OF MY KNOWLEDGE AND BELIEF.

CRAVEN THOMPSON & ASSOCIATES, INC.
 CERTIFICATE OF AUTHORIZATION NO. LB271

Thomas C. Shanahan
 THOMAS C. SHANAHAN FOR THE FIRM
 PROFESSIONAL SURVEYOR AND MAPPER NO. 4387
 STATE OF FLORIDA

THIS SKETCH AND DESCRIPTION OR COPIES THEREOF ARE NOT VALID WITHOUT THE SIGNATURE AND ORIGINAL RAISED SEAL OR A UNIQUE ELECTRONIC SIGNATURE OF A FLORIDA LICENSED PROFESSIONAL SURVEYOR AND MAPPER UNDER CHAPTER RULES 5J-17.061 & 5J-17.062 FLORIDA ADMINISTRATIVE CODE.

SHEET 1 OF 3 SHEETS

UPDATES and/or REVISIONS	DATE	BY	CK'D
REVISIONS PER COMMENTS	02/22/17	T.S.	C.D.

NOTE The undersigned and CRAVEN THOMPSON & ASSOCIATES, INC. make no representations or guarantees as to the information reflected hereon pertaining to easements, rights-of-way, set back lines, reservations, agreements and other similar matters, and further, this instrument is not intended to reflect or set forth all such matters. Such information should be obtained and confirmed by others through appropriate title verification.

NOTE Lands shown hereon were not abstracted for right-of-way and/or easements of record.

G:\2007\07-0108-CHILDRENS_CENTER\DWG\SD-VACATION OF UTILITY EASEMENTS.DWG

JOB NO.: 07-0108-001	DRAWN BY: T.S.	CHECKED BY: R.Y.	F.B.N/A	PG.N/A	DATED: 03-09-12
----------------------	----------------	------------------	---------	--------	-----------------



CRAVEN • THOMPSON & ASSOCIATES, INC.
ENGINEERS • PLANNERS • SURVEYORS

3563 N.W. 53RD STREET FORT LAUDERDALE, FLORIDA 33309 (954) 739-6400

FAX: (954) 739-6409

FOR: **AECOM**

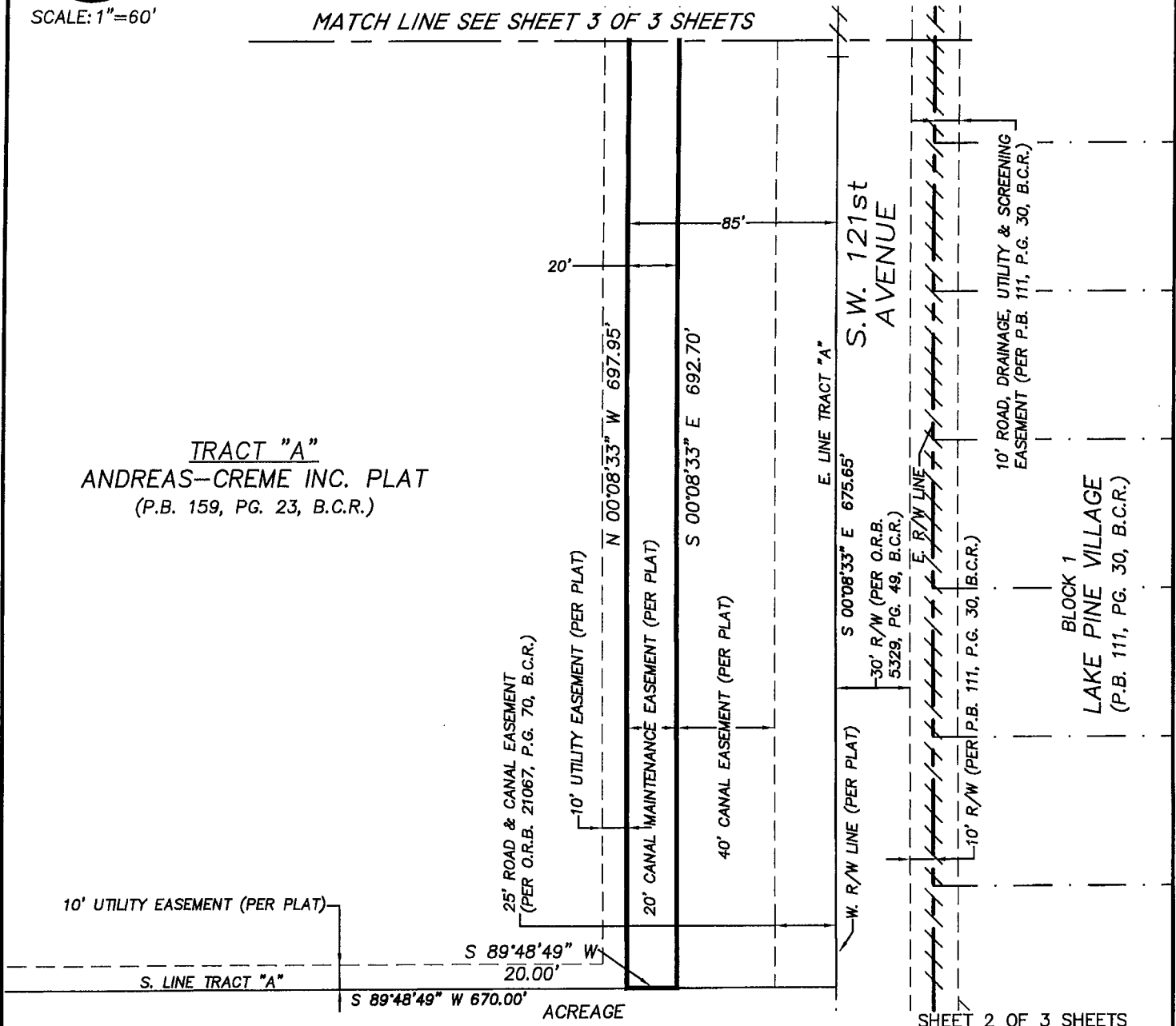


SCALE: 1"=60'

NOTE: THIS IS NOT A SKETCH OF SURVEY, but only a graphic depiction of the description shown hereon. There has been no field work, viewing of the subject property, or monuments set in connection with the preparation of the information shown hereon.

SKETCH AND DESCRIPTION

MATCH LINE SEE SHEET 3 OF 3 SHEETS



TRACT "A"
 ANDREAS-CREME INC. PLAT
 (P.B. 159, PG. 23, B.C.R.)

BLOCK 1
 LAKE PINE VILLAGE
 (P.B. 111, PG. 30, B.C.R.)

UPDATES and/or REVISIONS	DATE	BY	CK'D
REVISIONS PER COMMENTS	02/22/17	T.S.	C.D.

NOTE The undersigned and CRAVEN-THOMPSON & ASSOCIATES, INC. make no representations or guarantees as to the information reflected hereon pertaining to easements, rights-of-way, set back lines, reservations, agreements and other similar matters, and further, this instrument is not intended to reflect or set forth all such matters. Such information should be obtained and confirmed by others through appropriate title verification.

NOTE Lands shown hereon were not abstracted for right-of-way and/or easements of record.

G:\2007\07-0108-CHILDRENS_CENTER\DWG\SD-VACATION OF UTILITY EASEMENTS.DWG



CRAVEN • THOMPSON & ASSOCIATES, INC.
ENGINEERS • PLANNERS • SURVEYORS

3563 N.W. 53RD STREET FORT LAUDERDALE, FLORIDA 33309 (954) 739-6400

FAX: (954) 739-6409

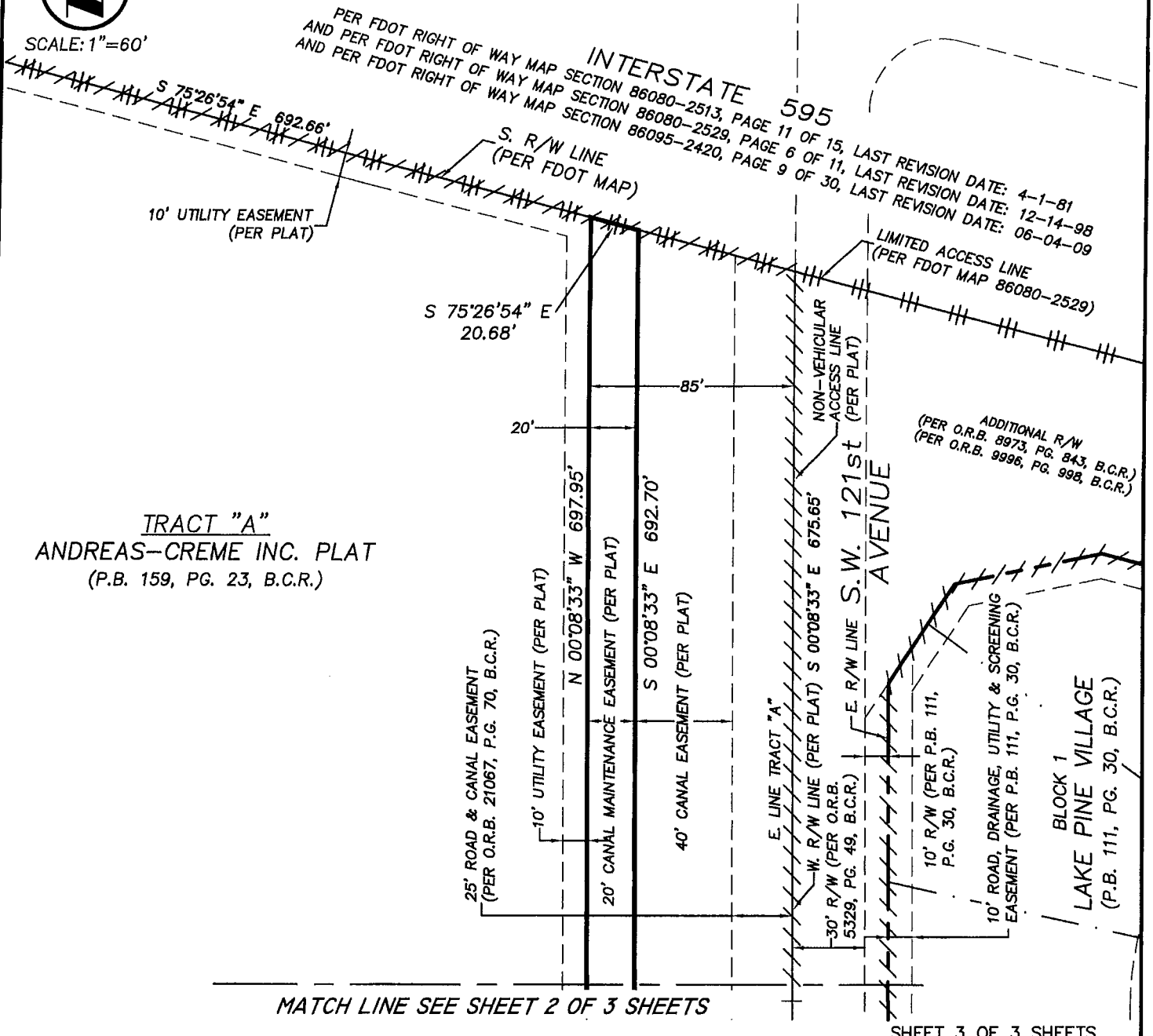
FOR: **AECOM**



SCALE: 1"=60'

NOTE: THIS IS NOT A SKETCH OF SURVEY, but only a graphic depiction of the description shown hereon. There has been no field work, viewing of the subject property, or monuments set in connection with the preparation of the information shown hereon.

SKETCH AND DESCRIPTION



SHEET 3 OF 3 SHEETS

UPDATES and/or REVISIONS	DATE	BY	CK'D	<p>NOTE The undersigned and CRAVEN-THOMPSON & ASSOCIATES, INC. make no representations or guarantees as to the information reflected hereon pertaining to easements, rights-of-way, set back lines, reservations, agreements and other similar matters, and further, this instrument is not intended to reflect or set forth all such matters. Such information should be obtained and confirmed by others through appropriate title verification.</p> <p>NOTE Lands shown hereon were not abstracted for right-of-way and/or easements of record.</p> <p>G:\2007\07-0108-CHILDRENS_CENTER\DWG\SD-VACATION OF UTILITY EASEMENTS.DWG</p>
REVISIONS PER COMMENTS	02/22/17	T.S.	C.D.	
JOB NO.: 07-0108-001	DRAWN BY: T.S.		CHECKED BY: R.Y.	F.B.N/A PG.N/A DATED: 03-09-12



CRAVEN • THOMPSON & ASSOCIATES, INC.
ENGINEERS • PLANNERS • SURVEYORS

3563 N.W. 53RD STREET FORT LAUDERDALE, FLORIDA 33309 (954) 739-6400

FAX: (954) 739-6409

FOR: AECOM

NOTE: THIS IS NOT A SKETCH OF SURVEY, but only a graphic depiction of the description shown hereon. There has been no field work, viewing of the subject property, or monuments set in connection with the preparation of the information shown hereon.

SKETCH AND DESCRIPTION
40' CANAL EASEMENT

ABBREVIATION LEGEND

- B.C.R. BROWARD COUNTY RECORDS
- F.D.O.T. FLORIDA DEPARTMENT OF TRANSPORTATION
- O.R.B. OFFICIAL RECORDS BOOK
- P.B. PLAT BOOK
- PG. PAGE
- R/W RIGHT-OF-WAY
- ///// NON-VEHICULAR ACCESS LINE PER PLAT

SURVEYOR'S NOTES:

BEARINGS SHOWN HEREON ARE BASED ON EAST LINE OF TRACT "A", "ANDREAS-CREME INC. PLAT", ACCORDING TO THE PLAT THEREOF AS RECORDED IN PLAT BOOK 159, PAGE 23, OF THE PUBLIC RECORDED OF BROWARD COUNTY, FLORIDA. SAID EAST LINE BEARS SOUTH 00°08'33" EAST

DESCRIPTION:

THE WEST 40.00 FEET OF THE EAST 65.00 FEET OF TRACT "A", ANDREAS-CREME INC. PLAT, ACCORDING TO THE PLAT THEREOF AS RECORDED IN PLAT BOOK 159, PAGE 23 OF THE PUBLIC RECORDS OF BROWARD COUNTY, FLORIDA.

SAID LANDS SITUATE, LYING AND BEING IN THE TOWN OF DAVE, BROWARD COUNTY, FLORIDA AND CONTAINING 27,499 SQUARE FEET OR 0.631 ACRES MORE OR LESS.

CERTIFICATE:

WE HEREBY CERTIFY THAT THIS SKETCH AND DESCRIPTION CONFORMS TO CHAPTER 5J-17, (FLORIDA ADMINISTRATIVE CODE), AS ADOPTED BY THE DEPARTMENT OF AGRICULTURE AND CONSUMER SERVICES, BOARD OF PROFESSIONAL SURVEYORS AND MAPPERS IN SEPTEMBER, 1981, AS AMENDED, PURSUANT TO CHAPTER 472.027 OF THE FLORIDA STATUTES, AND IS TRUE AND CORRECT TO THE BEST OF MY KNOWLEDGE AND BELIEF.

CRAVEN THOMPSON & ASSOCIATES, INC.
 CERTIFICATE OF AUTHORIZATION NO. LB271

THOMAS E. SHAHAN - FOR THE FIRM
 PROFESSIONAL SURVEYOR AND MAPPER NO. 4387
 STATE OF FLORIDA

THIS SKETCH AND DESCRIPTION OR COPIES THEREOF ARE NOT VALID WITHOUT THE SIGNATURE AND ORIGINAL RAISED SEAL OR A UNIQUE ELECTRONIC SIGNATURE OF A FLORIDA LICENSED PROFESSIONAL SURVEYOR AND MAPPER UNDER CHAPTER RULES: 5J-17.061 & 5J-17.062 FLORIDA ADMINISTRATIVE CODE.

UPDATES and/or REVISIONS	DATE	BY	CK'D
REVISIONS PER COMMENTS	02/22/17	T.S.	C.D.

NOTE The undersigned and CRAVEN-THOMPSON & ASSOCIATES, INC. make no representations or guarantees as to the information reflected hereon pertaining to easements, rights-of-way, set back lines, reservations, agreements and other similar matters, and further, this instrument is not intended to reflect or set forth all such matters. Such information should be obtained and confirmed by others through appropriate title verification.

NOTE Lands shown hereon were not abstracted for right-of-way and/or easements of record.

G:\2007\07-0108-CHILDRENS_CENTER\DWG\SD-VACATION OF UTILITY EASEMENTS.DWG



CRAVEN • THOMPSON & ASSOCIATES, INC.

ENGINEERS • PLANNERS • SURVEYORS

3563 N.W. 53RD STREET FORT LAUDERDALE, FLORIDA 33309 (954) 739-6400

FAX: (954) 739-6409

FOR: **AECOM**



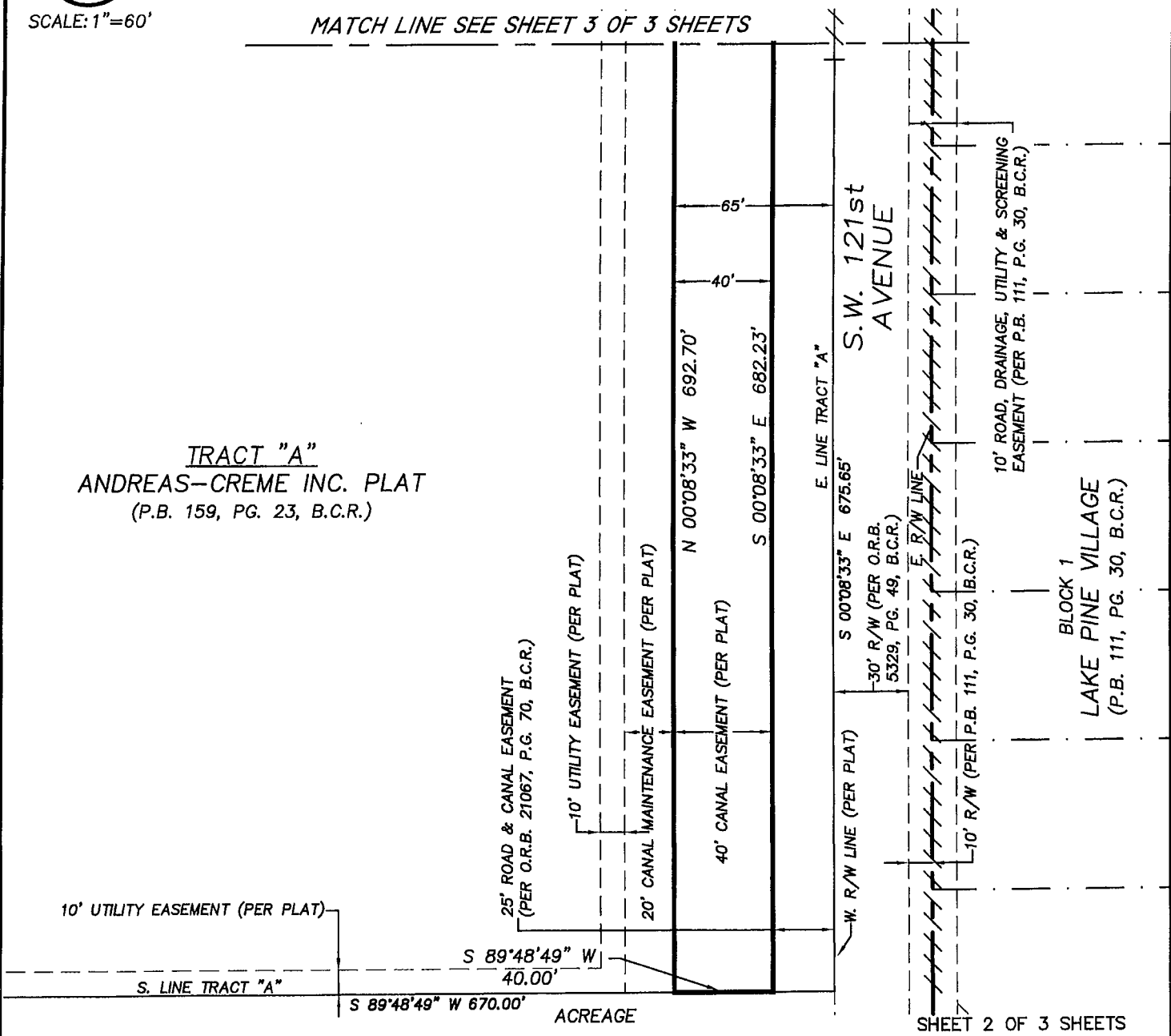
SCALE: 1"=60'

NOTE: THIS IS NOT A SKETCH OF SURVEY, but only a graphic depiction of the description shown hereon. There has been no field work, viewing of the subject property, or monuments set in connection with the preparation of the information shown hereon.

SKETCH AND DESCRIPTION

MATCH LINE SEE SHEET 3 OF 3 SHEETS

TRACT "A"
ANDREAS-CREME INC. PLAT
(P.B. 159, PG. 23, B.C.R.)



SHEET 2 OF 3 SHEETS

UPDATES and/or REVISIONS	DATE	BY	CK'D
REVISIONS PER COMMENTS	02/22/17	T.S.	C.D.

NOTE The undersigned and CRAVEN-THOMPSON & ASSOCIATES, INC. make no representations or guarantees as to the information reflected hereon pertaining to easements, rights-of-way, set back lines, reservations, agreements and other similar matters, and further, this instrument is not intended to reflect or set forth all such matters. Such information should be obtained and confirmed by others through appropriate title verification.

NOTE Lands shown hereon were not abstracted for right-of-way and/or easements of record.

G:\2007\07-0108-CHILDRENS_CENTER\DWG\SD-VACATION OF UTILITY EASEMENTS.DWG

JOB NO.: 07-0108-001	DRAWN BY: T.S.	CHECKED BY: R.Y.	F.B.N/A	PG. N/A	DATED: 03-09-12
----------------------	----------------	------------------	---------	---------	-----------------



CRAVEN • THOMPSON & ASSOCIATES, INC.
ENGINEERS • PLANNERS • SURVEYORS

3563 N.W. 53RD STREET FORT LAUDERDALE, FLORIDA 33309 (954) 739-6400

FAX: (954) 739-6409

Page 11 of 11

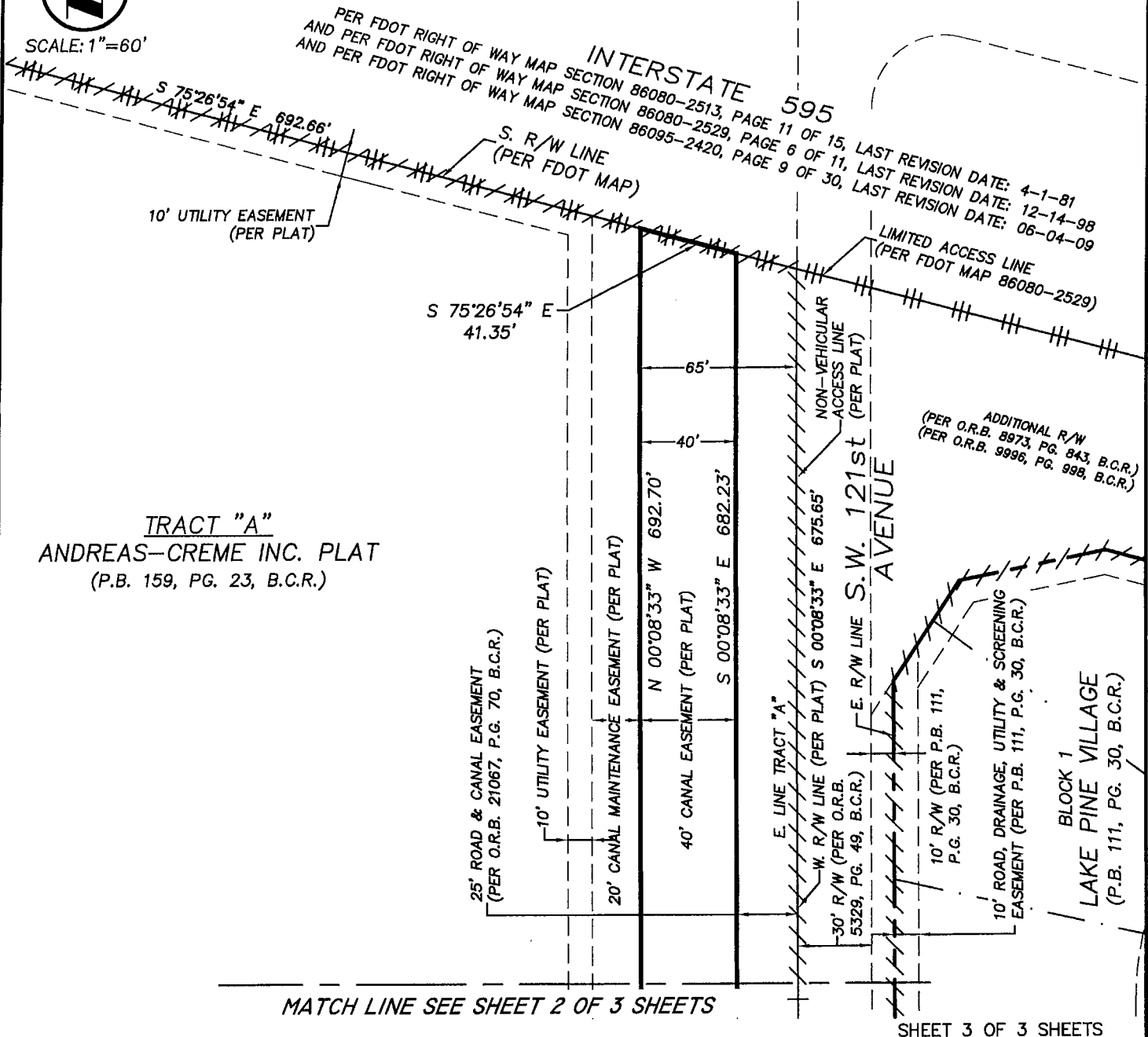
FOR: **AECOM**



SCALE: 1"=60'

NOTE: THIS IS NOT A SKETCH OF SURVEY, but only a graphic depiction of the description shown hereon. There has been no field work, viewing of the subject property, or monuments set in connection with the preparation of the information shown hereon.

SKETCH AND DESCRIPTION



UPDATES and/or REVISIONS	DATE	BY	CK'D
REVISIONS PER COMMENTS	02/22/17	T.S.	C.D.

NOTE The undersigned and CRAVEN-THOMPSON & ASSOCIATES, INC. make no representations or guarantees as to the information reflected hereon pertaining to easements, rights-of-way, set back lines, reservations, agreements and other similar matters, and further, this instrument is not intended to reflect or set forth all such matters. Such information should be obtained and confirmed by others through appropriate title verification.

NOTE Lands shown hereon were not abstracted for right-of-way and/or easements of record.

G:\2007\07-0108-CHILDRENS_CENTER\DWG\SD-VACATION OF UTILITY EASEMENTS.DWG