



Right Tree, Right Place
Caring for trees and your service

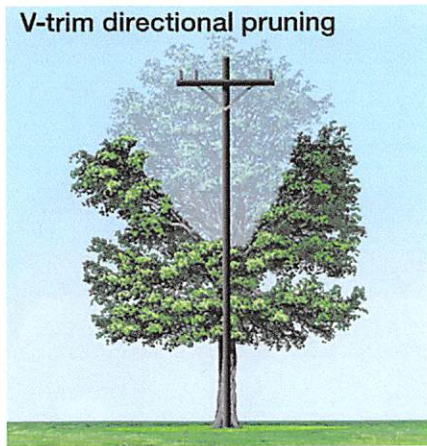
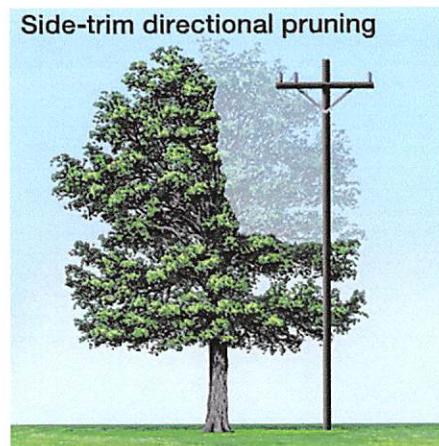
CHANGING THE CURRENT.  **FPL.**

Line clearing helps prevent outages

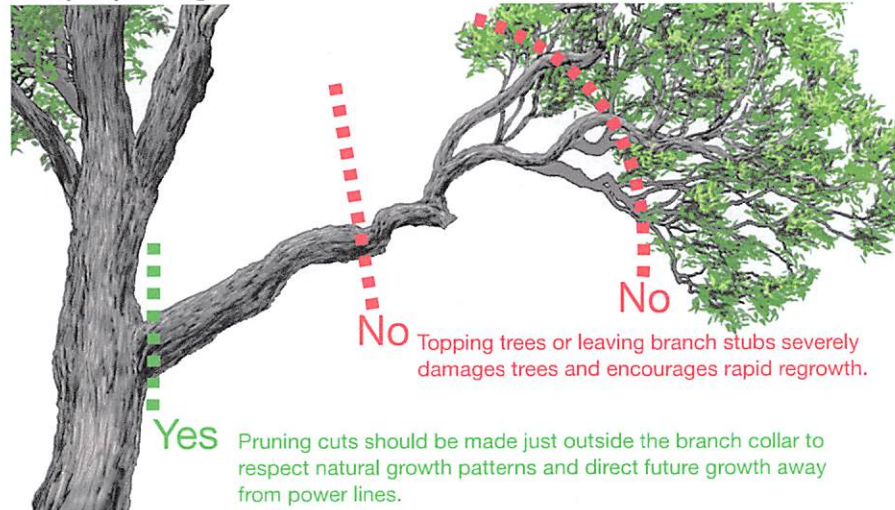
FPL is committed to delivering safe, reliable electric service to our customers. Trees, especially palm trees, can interfere with power lines and are one of the most common causes of power outages and flickers.

FPL's preventive maintenance program clears tree limbs and branches that can potentially cause safety issues and power outages. FPL uses "directional pruning" to protect the health of your trees while helping them grow away from power lines. Directional pruning is a professional technique of pruning trees away from power lines by removing entire branches and limbs down to the main trunk of the tree where trees normally shed them. This method directs future tree growth away from the power lines and reduces re-growth.

Directional pruning is an industry best practice with guidelines supported by the International Society of Arboriculture, American National Standard Institute and university research.



Proper pruning for tree health



Plant the Right Tree in the Right Place

By selecting the right tree and planting it in the right place, you can help reduce power outages and flickers for you and your neighbors.

Trees come in all shapes and sizes, and often change dramatically over their lifetimes.

Before selecting a tree, make sure you know how tall, wide and deep it will be at maturity. For a list of recommended trees for your area, please visit FPL.com/trees.

Where you plant your tree is just as important as what type of tree you plant. Blocking an unsightly view or creating some shade may be a priority, but you must also think about your tree's impact on existing utility lines as it grows taller and wider. At maturity, will its canopy reach the overhead lines? Keep in mind that the larger the power pole or structure, the farther back you should plant your tree. Planting trees that will interfere with power lines violates Florida law and can jeopardize the reliability of your electric service. Taking the time to consider location now can prevent avoidable power disturbances for years to come.

It's never too late! To correct landscaping missteps of the past, try relocating or removing small trees to prevent future service issues. **No amount of trimming can substitute for smart landscaping and responsible maintenance by property owners.**



Trees in your neighborhood

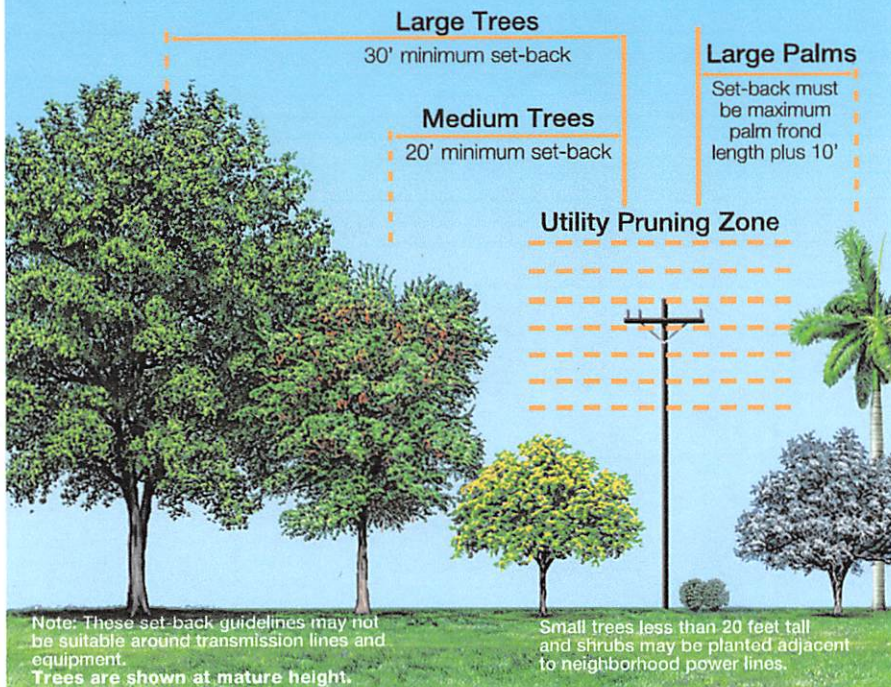
When landscaping your home or business, remember to:

- » Plant only small trees and shrubs in areas adjacent to power lines.
- » Keep medium and large trees, including palms, at a safe distance from power lines.
- » Keep transformers clear of vegetation at all times.



Room to grow

For the health of your trees and the reliability of your electric service, give your trees ample room to grow without interfering with power lines or equipment. FPL recommends the following set-back distances based on your tree's mature height.



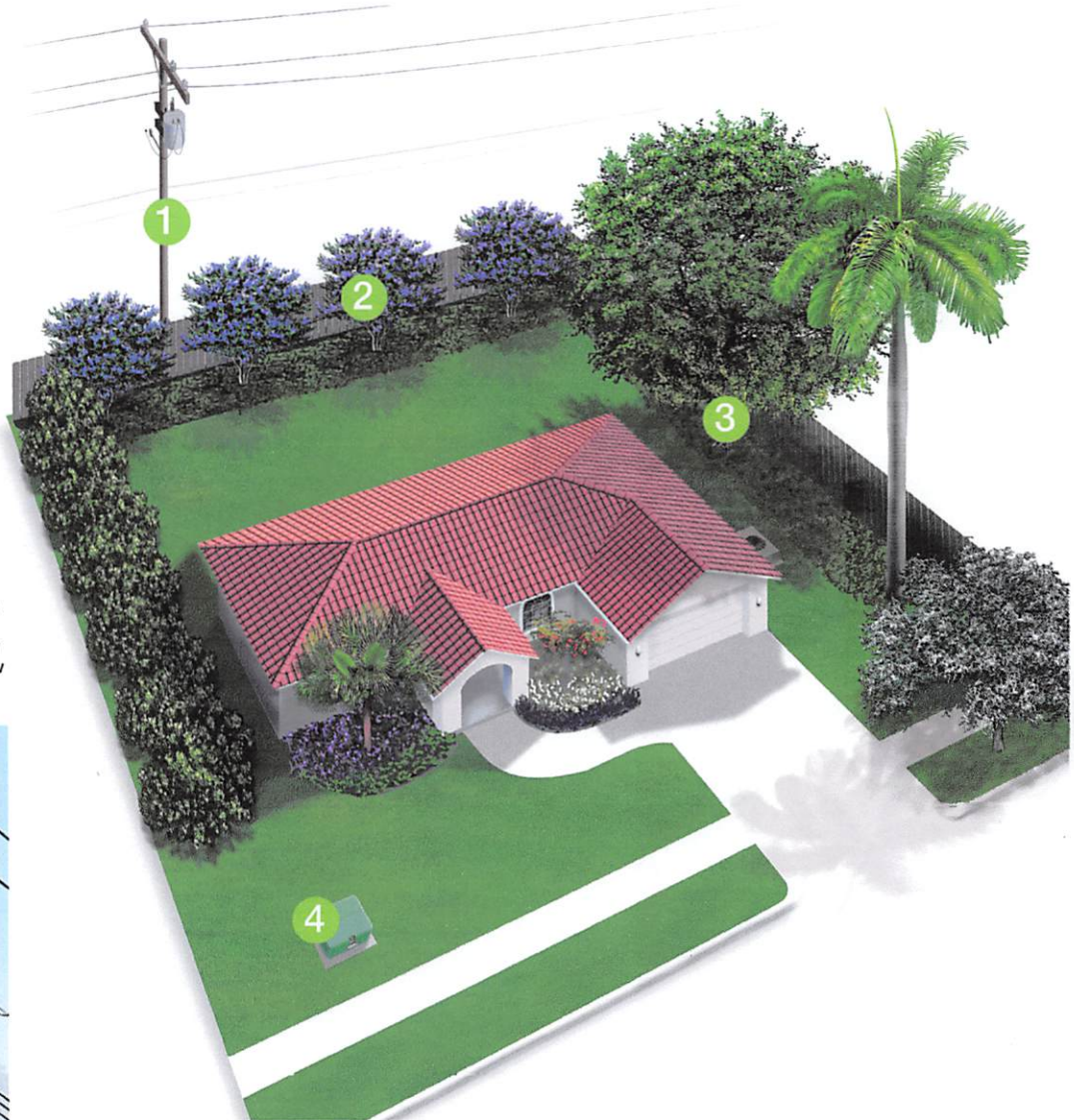
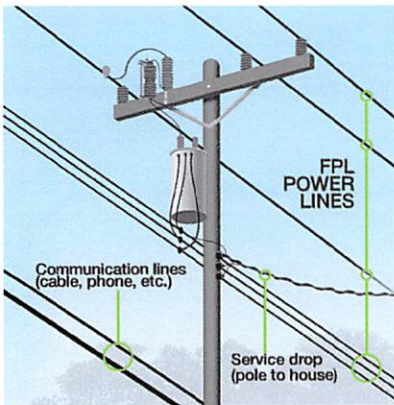


Smart landscaping starts with a plan

FPL is working hard to deliver worry-free energy, now and in the future, and we need your help. Use this landscape planning guide to help ensure reliable electric service for you and your neighbors.

1 Note the location of power lines

Power lines are usually located at the top of the utility pole, farthest from the ground. Cable television and telephone lines run closer to the ground, below power lines. When planting your trees, be sure to give them ample room to grow without interfering with power lines.

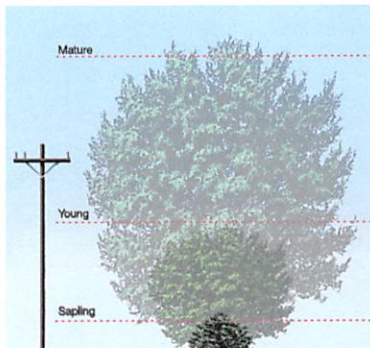


2 Find the right tree, choose the right spot

Before selecting a tree, consider how tall, wide and deep it will be at maturity. Then carefully consider the location and appropriate set-back distances to prevent avoidable power disturbances for years to come.

3 Shading

Landscaping to shade your home from the sun is a low-cost, effective way to reduce your cooling costs.



4 Keep transformers clear



Stay safe

When planting, what you can't see can hurt you, so before you reach for a shovel, reach for the phone. One easy call to 811 starts the process of getting underground utility lines marked. Make that call at least two full business days before you start digging. It's fast, free and required by law.

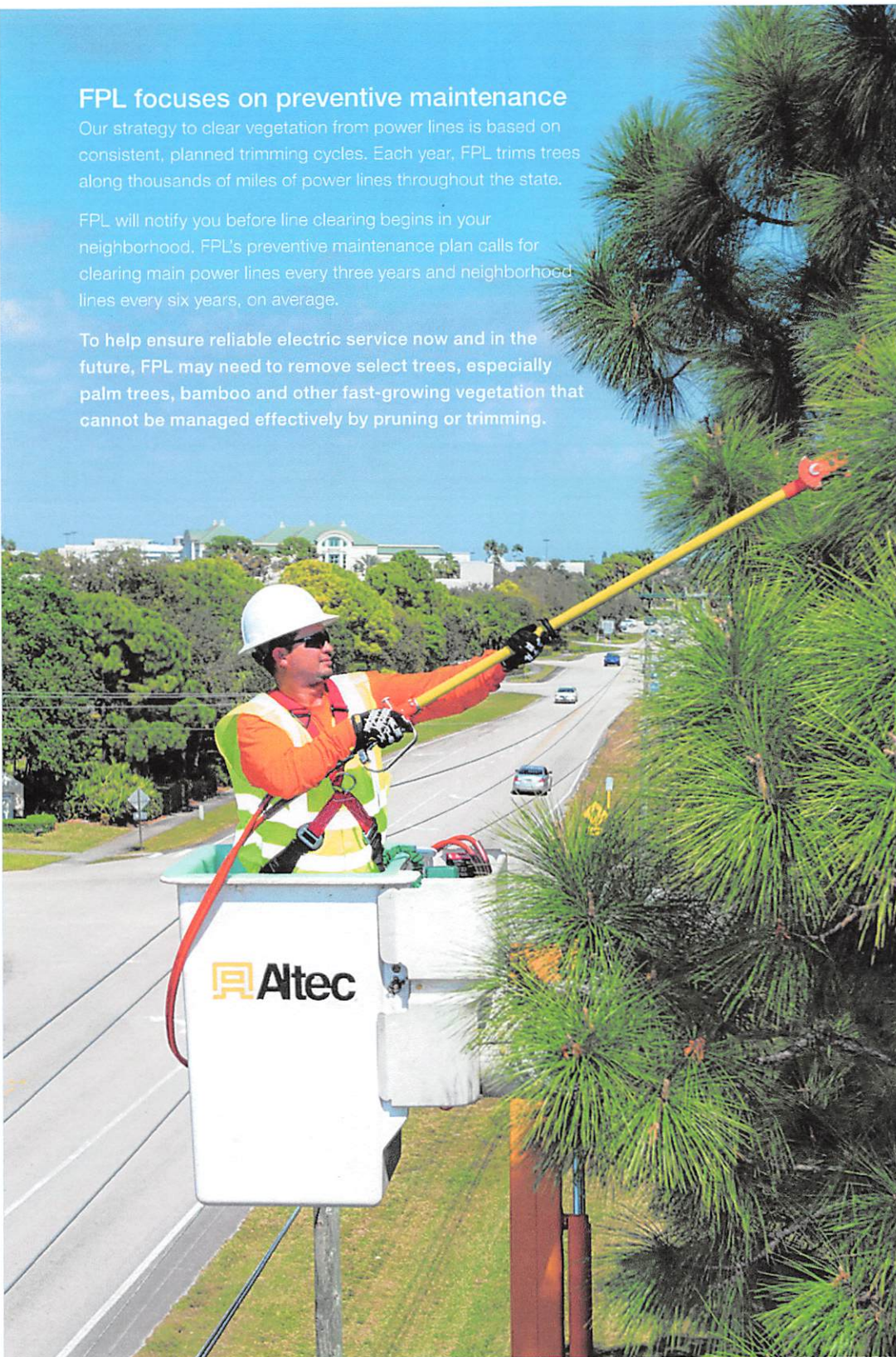
When doing yard work, always look up and note the location of power lines. Never attempt to trim any vegetation growing near power lines. When hiring landscapers or yard workers to trim your trees, remember to ask if they are licensed, insured and

FPL focuses on preventive maintenance

Our strategy to clear vegetation from power lines is based on consistent, planned trimming cycles. Each year, FPL trims trees along thousands of miles of power lines throughout the state.

FPL will notify you before line clearing begins in your neighborhood. FPL's preventive maintenance plan calls for clearing main power lines every three years and neighborhood lines every six years, on average.

To help ensure reliable electric service now and in the future, FPL may need to remove select trees, especially palm trees, bamboo and other fast-growing vegetation that cannot be managed effectively by pruning or trimming.





Your safety is important

If you decide to work outside, look up and note the location of power lines before you begin.

Careful avoidance of power lines is extremely important during yard work, especially when using tools, ladders, poles or pruning saws. Be sure that ladders or scaffolds are far enough away so that you — and the ends of the tools you're using — don't come within 10 feet of power lines.

Never attempt to trim any vegetation growing near power lines. Only specially trained line-clearing professionals should work around power lines.

Call before you dig. Florida law requires that you call **Sunshine State One Call at 811** to locate and mark buried power lines and other utilities before you dig. Call 811 at least two business days before you begin work to avoid unintentionally hitting underground utility lines. This free service helps keep everyone safe.

FPL.com/trees
1-800-226-3545



Florida Power & Light Company has been named a Tree Line USA utility by The National Arbor Day Foundation.

