

# EXHIBIT 3

Marty Kiar Broward County Property Appraiser Florida







SW 32ND CT

SW 33RD ST

Former elementary school

SITE

SW 21ST AVE

SW 11TH AVE

Existing Closure  
(School buses and traffic used to exit property and travel north into neighborhood)





EXISTING CLOSURE

SITE

SW 32ND CT

SW 33RD ST

SW 41ST AVE

SW 41ST AVE

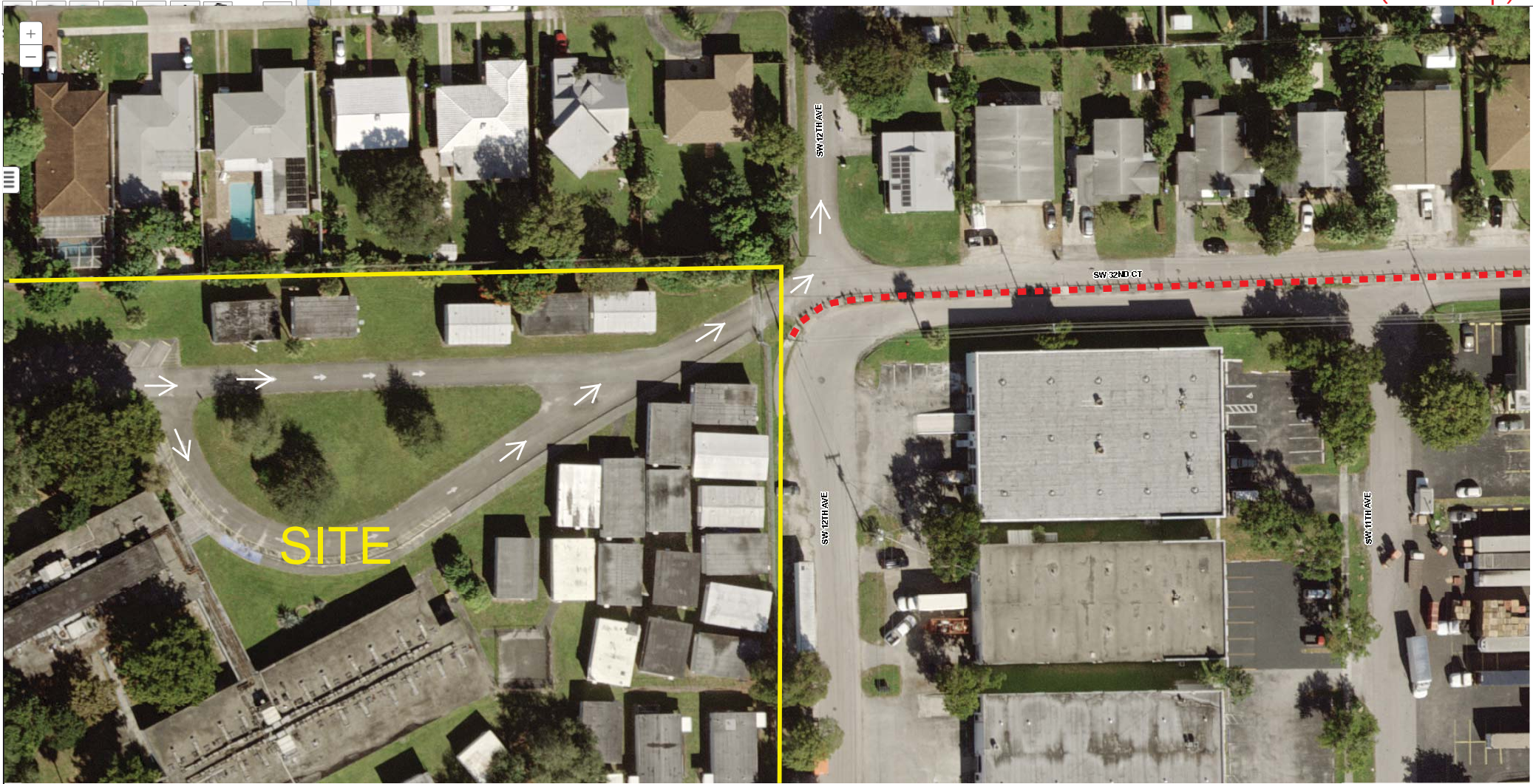
SW 41ST AVE

SW 41ST AVE

SW 32ND CT



EXISTING CLOSURE (close-up)







MODIFIED CLOSURE  
(prevents traffic from  
traveling north into  
neighborhood)

SITE

SW 12TH AVE

SW 32ND CT

SW 12TH AVE

SW 11TH AVE