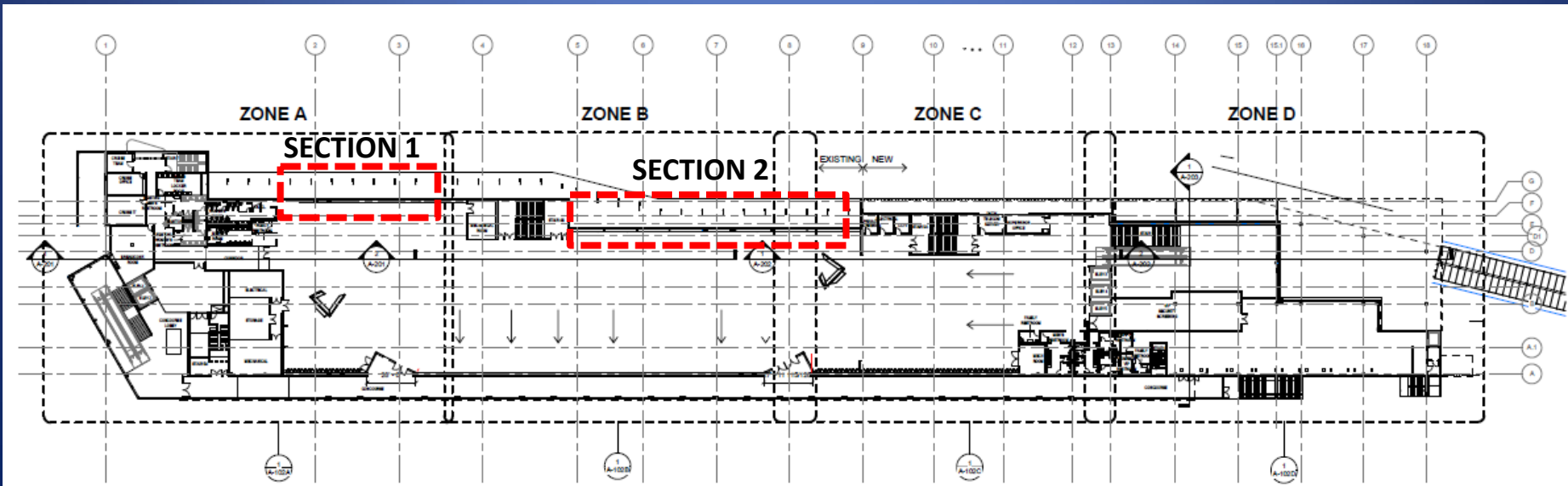
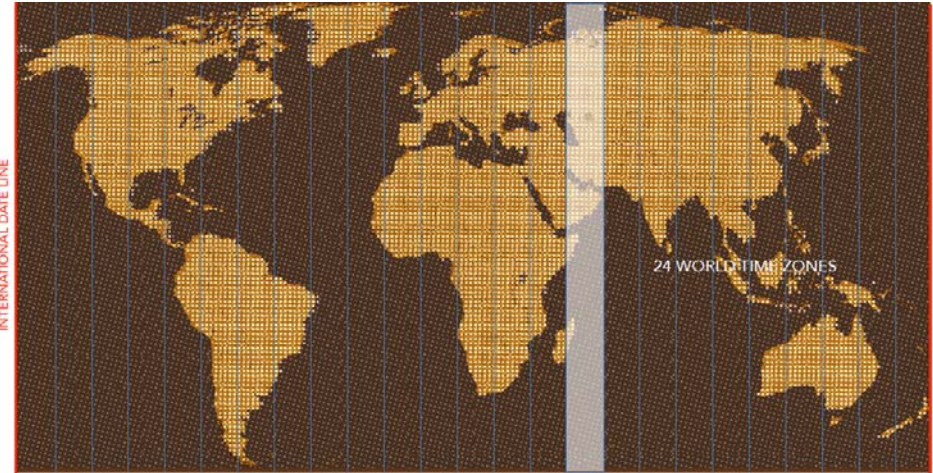
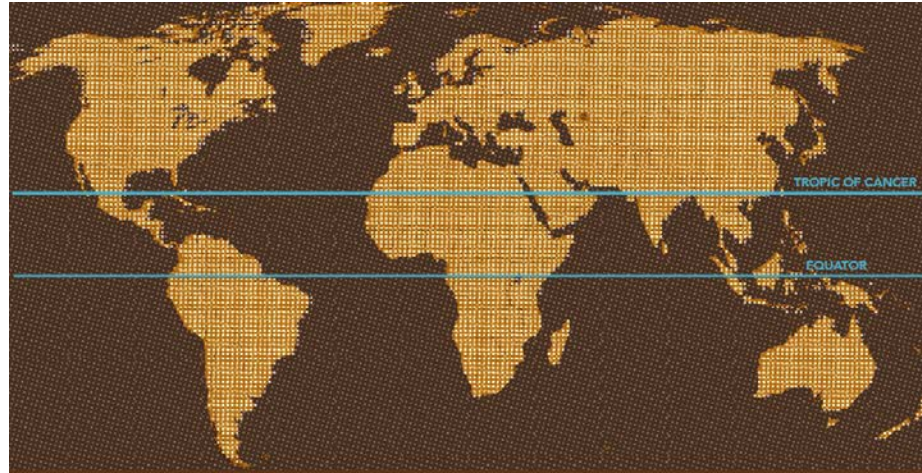


# Port Everglades Cruise Terminal 25 Project Site

- Cruise Terminal 25 will be the primary home for *Celebrity Edge*.
- The project will result in the transformation of two sections of an approximately 261' long wall located in the Cruise Terminal 25 check-in hall (wall section one is 96' long and wall section two is 165' long). The wall height varies between 11 and 16' high.
- The wall has opportunities for backlighting.

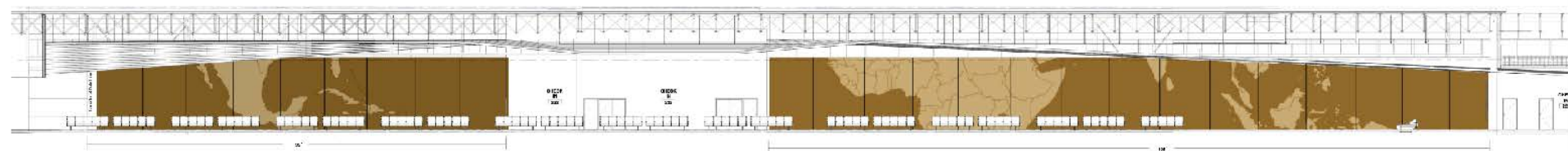


# Vanessa Till Hooper – Proposed Design



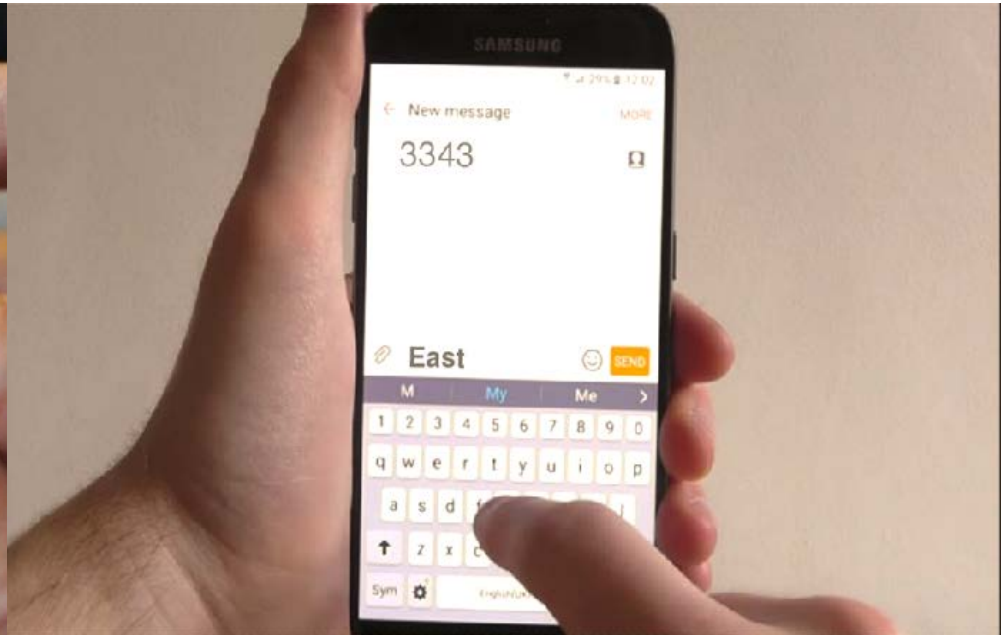
Note: World time zones simplified to equal strips with vertical acrobatic lines

Note: World time zones simplified to equal strips with vertical acrobatic lines



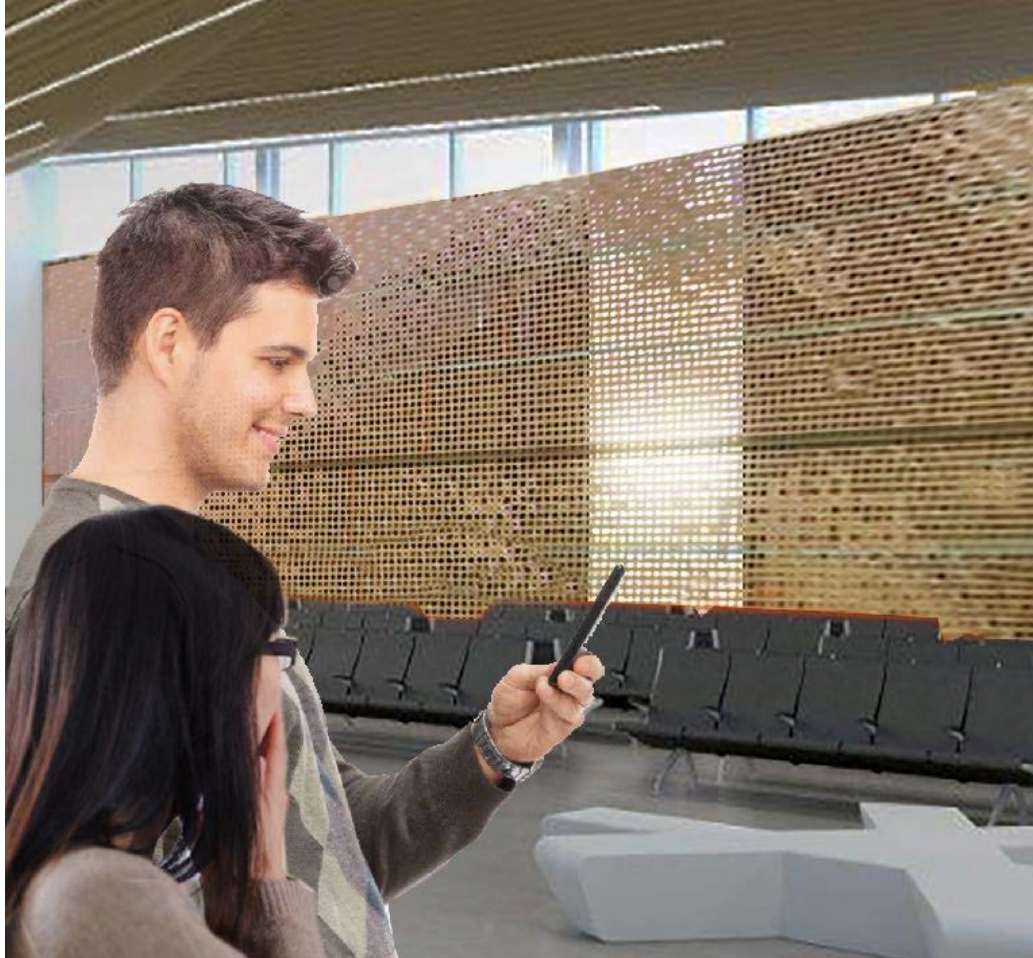


## Vanessa Till Hooper – Design Details



Text “West” OR Text “East”  
and watch the lighting effects move to the right or the left before your eyes

## Vanessa Till Hooper – Design Details



The lighting effects move sequentially along the vertical bands to the right or to the left depending on the text input. The light moves sequentially across one time zone with each text that is received by the system.

When the light bar reaches the destination at either side and “crosses over the international dateline” a light show is triggered, activating the whole installation with dancing pattern of light across both canvases.

Each time the light show is triggered a different light pattern will appear, encouraging participants to continue interacting even after reaching the “goal.”



# Vanessa Till Hooper – Rendering

