



DATE: September 22, 2017 **JM17 – 030 REVISED**

TO: Deputy Port Director Glenn Wiltshire
Port Everglades

FROM: Captain Jeffrey Morse, Port Everglades
Bureau of Operations - Regional Services

SUBJECT: LETF FUNDS

BSO Port Everglades is requesting approval to transfer funds from the Law Enforcement Trust Fund (LETF) funds into the District's Capital Fund (23250-42250) for FY18. Attached is a copy of the LETF Sharing Program Recap (dated May 17, 2017) which shows \$272,963 is currently available.

Once the LETF funds are transferred into the District's operating budget, it will be allocated strictly to the one-time expenses for the implementation of the Body Worn Camera Program (BWC) for Port Everglades law enforcement.

The BWC implementation will include:

57 Body Camera Kits (49 deputies, 7 sergeants and 1 road patrol lieutenant)	\$28,500
IT Hardware (see diagram attached)	\$12,093
BWC Room Build-Out (see Mills Electric estimate attached)	\$ 9,001
BWC Room Build-Out (see ARM Electrical estimate attached)	\$ 2,850

Your consideration of this request is appreciated.

JM/dmr

Attachments: BWC Program Overview, BWC Announcement Memo with Diagram, LETF Sharing Program Recap and Scope of Work/Estimates - Mills Electric Service and ARM Electrical Services

cc: Major Angelo Cedeno
File



BROWARD SHERIFF'S OFFICE
Body Worn Camera Project





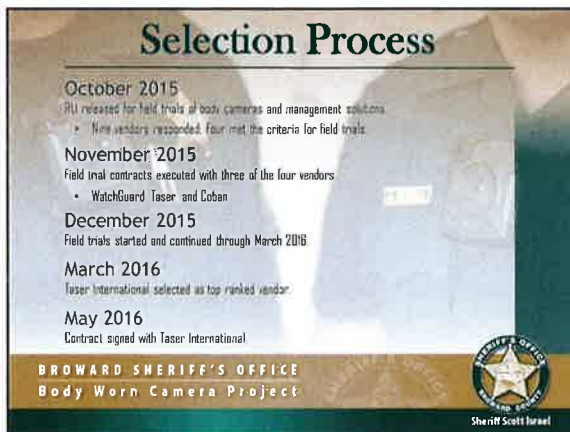
Purpose

The purpose of the *Body Worn Camera Program* is to

- Enhance Deputy safety
- Improve evidence collection
- Increase trust between the public and BSO
- Increase subject compliance
- Reduce false claims or possible litigation involving Deputy misconduct
- Reduce the need for Use of Force
- Identify possible training issues

BROWARD SHERIFF'S OFFICE
Body Worn Camera Project





Selection Process

October 2015

All received for field trials of body cameras and management solutions

- Nine vendors responded, four met the criteria for field trials

November 2015

Field trial contracts executed with three of the four vendors

- WatchGuard, Taser, and Coban

December 2015

Field trials started and continued through March 2016

March 2016

Taser International selected as top ranked vendor

May 2016

Contract signed with Taser International

BROWARD SHERIFF'S OFFICE
Body Worn Camera Project



Hardware

Deputy Kit includes

- 2 Cameras: Taser Axon Body 2
- iPod Touch / Capture device
- Uniform magnet mount
- Tactical Vest magnet mount
- Pocket mount clips
- Chargers / Cables

BROWARD SHERIFF'S OFFICE
Body Worn Camera Project



Hardware

Taser Axon Body 2

- 12+ hours battery life
- Pre-record buffer
- 30 frames per second
- 143° diagonal field of view
- Rugged / lightweight / water resistant
- Integrated Wi-Fi

BROWARD SHERIFF'S OFFICE
Body Worn Camera Project



Hardware


Axon View / Axon Capture

- Apple iPod touch
- Increases Deputy efficiency
- Capture audio, photo, and video evidence in the field
- Identify, Categorize, and Upload evidence directly from device to Evidence.com

Axon View App

Axon Capture App

BROWARD SHERIFF'S OFFICE
Body Worn Camera Project



Expenses

- Up to 1,500 users between regional areas and contract cities
- One time Capital Outlay (LETF Eligible) - \$500 per deputy kit
- Recurring Operating Costs: \$880 Annually per Deputy, includes:

Storage and Hardware Support <ul style="list-style-type: none"> • Cloud storage (Evidence.com) • Licensing • Warranty • Hardware replacement every 2.5 years 	Personnel <ul style="list-style-type: none"> • Evidence database management • Administrative functions • Public Records Requests • Video Redaction • File sharing with State Attorney's Office • Database Audits • User technical support
---	---

BROWARD SHERIFF'S OFFICE
Body Worn Camera Project

Sheriff Scott Israel

Infrastructure Expenses

Our Bit-Rates

Setting - Axon Body 2 (84 Gigabytes of Storage)	Bit Rate	File size Capacity	Storage
LOW SD (480P - Faster upload speed)	0.8 mb	- 70 hrs	
HIGH SD (480P - Balance of Speed and Quality)	1.8 mb	- 35 hrs	
LOW HD (720P - Better Quality) - Recommended	2.7 mb	- 23 hrs	
HIGH HD (1080P - Best Quality)	5.4 mb	- 12 hrs	

Typical Data Usage

For an 8 hour shift, 60 minutes of video per officer.
For a 10 hour shift, 90 minutes of video per officer.
For a 12 hour shift, 120 minutes of video per officer.
Estimated file size 6GB per Deputy shift.

BROWARD SHERIFF'S OFFICE
Body Worn Camera Project

Sheriff Scott Israel

Infrastructure Expenses

Body Cam Network District Diagram

Device	IP	Port	Vendor	Quantity
Switch	10.10.10.1	24	Cisco	1
Switch	10.10.10.2	24	Cisco	1
Switch	10.10.10.3	24	Cisco	1
Switch	10.10.10.4	24	Cisco	1
Switch	10.10.10.5	24	Cisco	1
Switch	10.10.10.6	24	Cisco	1
Switch	10.10.10.7	24	Cisco	1
Switch	10.10.10.8	24	Cisco	1
Switch	10.10.10.9	24	Cisco	1
Switch	10.10.10.10	24	Cisco	1
Switch	10.10.10.11	24	Cisco	1
Switch	10.10.10.12	24	Cisco	1
Switch	10.10.10.13	24	Cisco	1
Switch	10.10.10.14	24	Cisco	1
Switch	10.10.10.15	24	Cisco	1
Switch	10.10.10.16	24	Cisco	1
Switch	10.10.10.17	24	Cisco	1
Switch	10.10.10.18	24	Cisco	1
Switch	10.10.10.19	24	Cisco	1
Switch	10.10.10.20	24	Cisco	1
Switch	10.10.10.21	24	Cisco	1
Switch	10.10.10.22	24	Cisco	1
Switch	10.10.10.23	24	Cisco	1
Switch	10.10.10.24	24	Cisco	1
Switch	10.10.10.25	24	Cisco	1
Switch	10.10.10.26	24	Cisco	1
Switch	10.10.10.27	24	Cisco	1
Switch	10.10.10.28	24	Cisco	1
Switch	10.10.10.29	24	Cisco	1
Switch	10.10.10.30	24	Cisco	1
Switch	10.10.10.31	24	Cisco	1
Switch	10.10.10.32	24	Cisco	1
Switch	10.10.10.33	24	Cisco	1
Switch	10.10.10.34	24	Cisco	1
Switch	10.10.10.35	24	Cisco	1
Switch	10.10.10.36	24	Cisco	1
Switch	10.10.10.37	24	Cisco	1
Switch	10.10.10.38	24	Cisco	1
Switch	10.10.10.39	24	Cisco	1
Switch	10.10.10.40	24	Cisco	1
Switch	10.10.10.41	24	Cisco	1
Switch	10.10.10.42	24	Cisco	1
Switch	10.10.10.43	24	Cisco	1
Switch	10.10.10.44	24	Cisco	1
Switch	10.10.10.45	24	Cisco	1
Switch	10.10.10.46	24	Cisco	1
Switch	10.10.10.47	24	Cisco	1
Switch	10.10.10.48	24	Cisco	1
Switch	10.10.10.49	24	Cisco	1
Switch	10.10.10.50	24	Cisco	1
Switch	10.10.10.51	24	Cisco	1
Switch	10.10.10.52	24	Cisco	1
Switch	10.10.10.53	24	Cisco	1
Switch	10.10.10.54	24	Cisco	1
Switch	10.10.10.55	24	Cisco	1
Switch	10.10.10.56	24	Cisco	1
Switch	10.10.10.57	24	Cisco	1
Switch	10.10.10.58	24	Cisco	1
Switch	10.10.10.59	24	Cisco	1
Switch	10.10.10.60	24	Cisco	1
Switch	10.10.10.61	24	Cisco	1
Switch	10.10.10.62	24	Cisco	1
Switch	10.10.10.63	24	Cisco	1
Switch	10.10.10.64	24	Cisco	1
Switch	10.10.10.65	24	Cisco	1
Switch	10.10.10.66	24	Cisco	1
Switch	10.10.10.67	24	Cisco	1
Switch	10.10.10.68	24	Cisco	1
Switch	10.10.10.69	24	Cisco	1
Switch	10.10.10.70	24	Cisco	1
Switch	10.10.10.71	24	Cisco	1
Switch	10.10.10.72	24	Cisco	1
Switch	10.10.10.73	24	Cisco	1
Switch	10.10.10.74	24	Cisco	1
Switch	10.10.10.75	24	Cisco	1
Switch	10.10.10.76	24	Cisco	1
Switch	10.10.10.77	24	Cisco	1
Switch	10.10.10.78	24	Cisco	1
Switch	10.10.10.79	24	Cisco	1
Switch	10.10.10.80	24	Cisco	1
Switch	10.10.10.81	24	Cisco	1
Switch	10.10.10.82	24	Cisco	1
Switch	10.10.10.83	24	Cisco	1
Switch	10.10.10.84	24	Cisco	1
Switch	10.10.10.85	24	Cisco	1
Switch	10.10.10.86	24	Cisco	1
Switch	10.10.10.87	24	Cisco	1
Switch	10.10.10.88	24	Cisco	1
Switch	10.10.10.89	24	Cisco	1
Switch	10.10.10.90	24	Cisco	1
Switch	10.10.10.91	24	Cisco	1
Switch	10.10.10.92	24	Cisco	1
Switch	10.10.10.93	24	Cisco	1
Switch	10.10.10.94	24	Cisco	1
Switch	10.10.10.95	24	Cisco	1
Switch	10.10.10.96	24	Cisco	1
Switch	10.10.10.97	24	Cisco	1
Switch	10.10.10.98	24	Cisco	1
Switch	10.10.10.99	24	Cisco	1
Switch	10.10.10.100	24	Cisco	1

BROWARD SHERIFF'S OFFICE
Body Worn Camera Project

Sheriff Scott Israel

Rollout Plan

- Recurring costs are calculated annually.
- October 1st - September 31st for FY-2016/2017
- Districts will need to have infrastructure buildout in place before deployment.
- Projected deployment will begin July 2016 for regional Deputies
- Projected deployment will begin October 2016 for contract city Deputies.

BROWARD SHERIFF'S OFFICE
Body Worn Camera Project



Sheriff Scott Israel

Broward Sheriff's Office
2601 West Broward Boulevard
Fort Lauderdale, FL 33312
954.831.8900
www.sheriff.org



April 18th, 2017

Mr. Steven M. Cernak
Chief Executive & Port Director
Port Everglades
1850 Eller Drive
Fort Lauderdale, FL 33316

Re: Body Worn Camera Program

Dear Mr. Cernak:

BSO is pleased to announce that we have entered into a contract with Taser International and are moving forward with the implementation of our Body Worn Camera (BWC) Program. I would like to outline both the Capital and Operating costs associated with the program and memorialize the roles and responsibilities of BSO and those of Port Everglades. The costs for the program are as follows:

Capital:

<u>Item</u>	<u>Total</u>
Body Camera Kit \$500 per deputy x 57	\$28,500
IT Hardware (See Appendix 1)	\$12,093
BWC Room build-out	TBD / Port Responsible

Each Capital line item is a one-time expense and subject to the utilization of Law Enforcement Trust funds, if the city elects to do so.

Operating (annual):

<u>Item</u>	<u>Total</u>
Storage, hardware, support & personnel \$880 x 57	\$50,160
IT Hardware Maintenance & Data Circuit	\$24,967.28

Each Operating line item is an annual expense and may require a modification or amendment to an existing agreement. The initial cost is based on an Oct 1, 2016 implementation, operating expenses will be prorated based on the implementation date.

Letter – Body Worn Camera Program
April 18, 2017
Page 2

Roles and Responsibilities

- The rollout of body cameras is a complex process that will be managed by BSO.
- For cameras to be fully deployed, the Port Everglades' district office must have a completed body camera room with the necessary IT infrastructure to support the data transfer to Evidence.com.
- The construction costs for the body camera room will be the responsibility of Port Everglades. BSO met with Port Everglades command and provided construction, security recommendations and specifications, to include all data and power requirements for the docking stations.
- BSO will make arrangements for the AT&T data circuit to be brought to the building, and will immediately advise the city if AT&T must perform any digging and/or pull conduit from the street.
- BSO will order the required IT hardware and the associated costs will be reimbursed by Port Everglades.
- BSO will install, configure and support all IT and BWC hardware associated with the BWC project at no additional cost.
- Upon completion of the BWC room within the Port Everglades district office, BSO will train and deploy cameras for district personnel.

Upon your review of this letter, **please respond back to me via email at Jonathan_appel@sheriff.org** reference this correspondence **by May 15, 2017** confirming the port's intention to support and move forward with a BWC implementation within Port Everglades.

We appreciate the continued partnership with the Port to deliver the finest public safety service to the residents and visitors to Broward County. If I can answer any questions, or further expand upon the BWC implementation please feel free to contact me at 954-321-4758.

Sincerely,



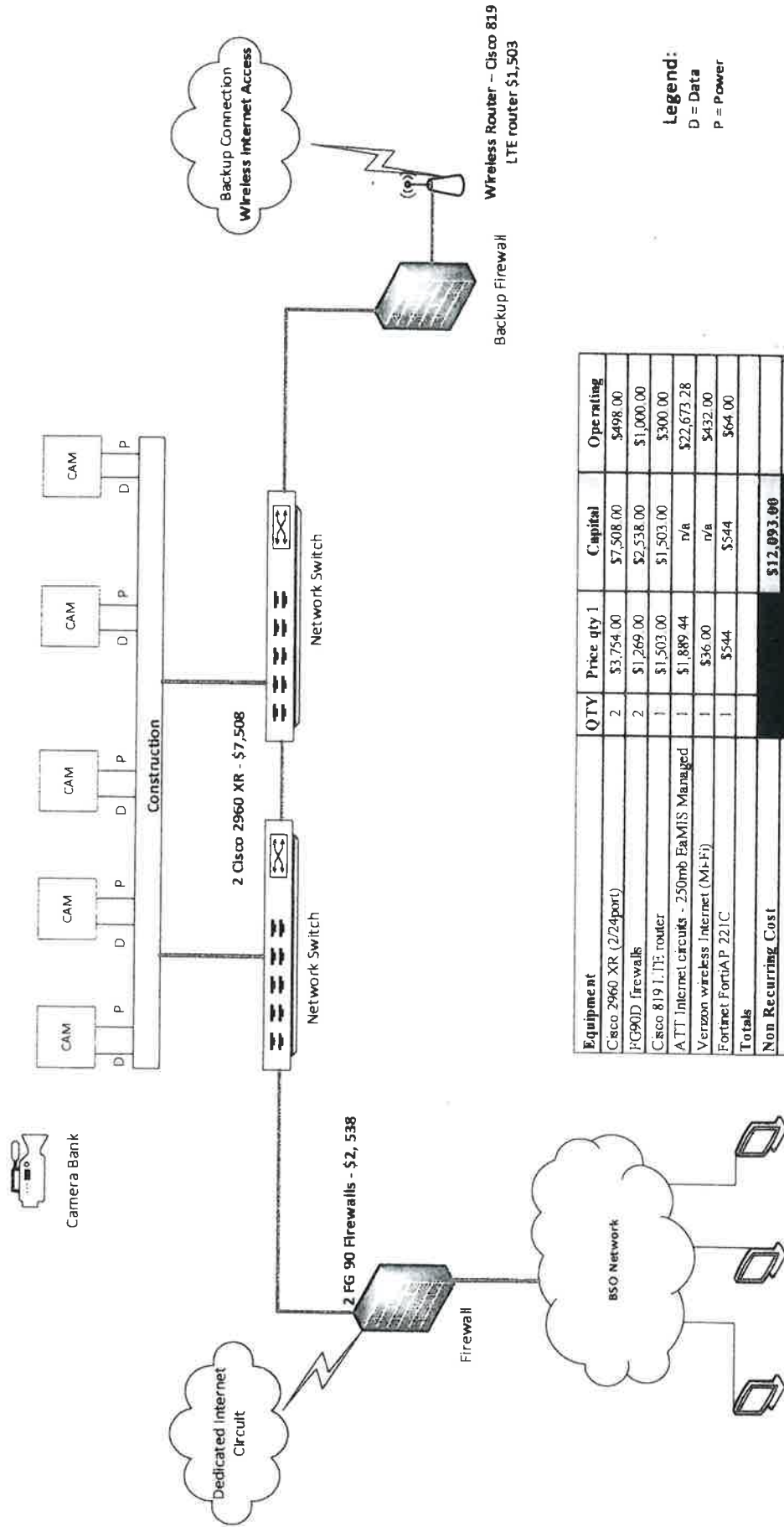
Jonathan S. Appel
Captain
Department of Administration

JSA:emm

Attachment(s): Appendix I

cc: Captain Jeffrey Morse, BSO Port Everglades District

Body Cam Network District Diagram



Equipment	QTY	Price	qty 1	Capital	Operating
Cisco 2960 XR (2/24port)	2	\$3,754.00		\$7,508.00	\$498.00
FG90D firewalls	2	\$1,269.00		\$2,538.00	\$1,000.00
Cisco 819 LTE router	1	\$1,503.00		\$1,503.00	\$300.00
ATT Internet circuits - 250mb EAMIS Managed	1	\$1,889.44		n/a	\$22,673.28
Verizon wireless Internet (Mi-Fi)	1	\$36.00		n/a	\$432.00
Fortinet FortiA.P. 221C	1	\$544		\$544	\$64.00
Totals					
Non Recurring Cost				\$12,093.00	
Annual Recurring Cost					\$24,967.28

Legend:
D = Data
P = Power

BROWARD COUNTY PORT EVERGLADES DEPARTMENT
Law Enforcement Trust Fund (LETf) & Federal Equitable Sharing (FES) Funds
Through May 17, 2017

	Local - LETf 7500	FES		Total
		Justice 7505	Treasury 7510	
Beginning Balance As of 10/01/16	299,928.63	7,446.12	57,257.53	364,632.28
Receipts Thru 5/12/17	130,234.60	3,274.81	-	133,509.41
Expenses Thru 5/12/17	(157,200.00)	-	-	(157,200.00)
Funds Returned to BSO on checks dated 4/26/17	-	(10,720.93)	(57,257.53)	(67,978.46)
Ending Balance	<u>272,963.23</u>	<u>-</u>	<u>-</u>	<u>272,963.23</u>

Since Inception	Local - LETf	FES		Total
		Justice	Treasury	
Receipts	540,923.83	175,968.01	104,830.85	821,722.69
Expenses	(267,960.60)	(165,247.08)	(47,573.32)	(480,781.00)
Funds Returned to BSO	-	(10,720.93)	(57,257.53)	(67,978.46)
Ending Balance	<u>272,963.23</u>	<u>-</u>	<u>-</u>	<u>272,963.23</u>

SEC-17-047
REQ# PAD 0000126

MILLS ELECTRIC SERVICE, INC.

830 Northwest 57th Court, Fort Lauderdale, Florida 33309
Telephone (954) 640-5262 Fax (954) 640-5263 Email - generalmail@millselec.com

ESTIMATE FOR ELECTRICAL SERVICES

Date: June 16, 2017
Submitted to: ATT: Samuel L. Harvill
Broward County – Port Everglades
Security Operations Manager
C: 954-258-5781

Submitted for: Add circuits for new body camera chargers

Mills Electric Services proposes to provide labor and material for the scope of work listed.

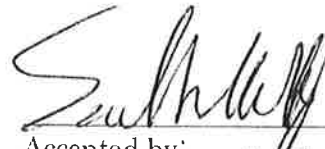
- Provide and install one 3/4" EMT conduit with five #10 wires from normal panel L1 to body camera charger location (approximately 120' away). Terminate new wires on existing spare 20 amp breakers
- Provide and install 4000 series wiremold down existing wall and across desk area that new chargers will be.
- Provide and install receptacles in new wiremold across desk very few feet for new charging stations to plug into.
ns are provided and installed by others

(Line Item 4) Master Electrician 1 hours @ \$95.00 = \$95
 (Line Item 6) Journeyman Electrician 48 hours @ \$82.00 = \$3,936
 (Line Item 8) Apprentice Electrician 48 hours @ \$65.00 = \$3,120

0. *
 48. * x
 82. =
 3,936.00 *
Labor Cost = \$7,151
(Line Item 21) Parts and Material cost = \$1,850.00
Estimated Total Cost = \$9,001.00

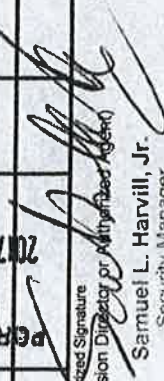

48. * x
 65. =
 3,120.00 *
 not responsible for the existing wiring conditions associated with
 g normal business hours 7am – 4pm.
 sed lamps and ballast

0. *
 95.00 +
 3,936.00 +
 3,120.00 +
 1,850.00 +
 9,001.00 *


 Accepted by:
 Samuel L. Harvill, Jr.
 Security Manager
 Port Everglades

PORT DIRECTOR APPROVAL

 7/2/2017

TOTAL ESTIMATED COST		FY		REQUESTING ORGANIZATION		PURCHASING DIVISION		No. SEC-17-047 REQ#: PAD0000126		
\$9,001.00		17		Port Director's Office		Broward County		CHECK PROPER REQUISITION BY		
				Appropriation		PURCHASE REQUISITION		PD PDE SRQ		
LINE	COMMODITY NUMBER	FUND	PROGRAM CODE	DEPARTMENT ID	ACCOUNT	SPECIFICATIONS	QUANTITY	UNITS	UNIT COST	TOTAL COST
		42100	42100	75103000	540040	(L4) Master Electrician	1.0	EA	95.00	95.00
						(L6) Journeyman Electrician	48.0	EA	82.00	3,936.00
						(L8) Apprentice Electrician	48.0	EA	65.00	3,120.00
						(L21) Parts and Material Cost	1.0	EA	1,850.00	1,850.00
						SERVICE:			TOTAL:	9,001.00
						Add circuits for new Body Camera Chargers				
RECEIVED 2017 JUL 12 AM 9:45 PORT DIRECTOR'S OFFICE										
Authorized Signature (Division Director or Authorized Agent)  Samuel L. Harvill, Jr. PORT DIRECTOR										
Suggested Vendor Mills Electric Service, Inc.										
For Delegated Purchase Agency Contact Person and Phone #: Michelle George 954-468-0136										
Shipping/Freight Date: 7/12/2017 PORT DIRECTOR APPROVAL 										
CAB Receiving Quote# Vendor Address Vendor Contact Requested By (Agency Contact) Sam Harvill										
Date Customer Account # Vendor Phone # Date Requested 6/30/2017 Date Needed Immediately										
Ship To Code PRT 021										
Awarded Vendor Vendor # VC00025035 F.O.B. Terms										
Delivery Date Master Agreement # and Title Y1109311B1_1										

ARM Electrical Services LLC

4613 N University Dr, #494

Coral Springs, FL 33067

P: 954-214-0848 F: 954-906-8333

Date	Quote #
09/22/2017	2016525R1

Bill To
Broward Sheriff's Office Finance Division P.O. Box 9507 Ft. Lauderdale, FL 33310

Ship To
Broward County - Port Everglades 1850 Eller Drive Fort Lauderdale, FL 33316.

Description	Quantity	Unit Cost	Total
<p>Site: Broward County - Port Everglades</p> <p>Scope of Work:</p> <ul style="list-style-type: none"> - Provide and install ten CAT 6 cables from Cisco switch to body camera charging stations - Provide and install (1) LV box behind each new charging station for new LV wiring - Terminate LV cable to Cisco switch behind charging station - Install (1) Ethernet jack on charger end - Provide (1) 3' CAT 6 cable for each charger - New Cisco switch by others and wired into the existing network by others <p>NOTE:</p> <ul style="list-style-type: none"> - Permitting not included - Price includes labor and material - All programming provided by others <p>This quote is valid for 30 days and based upon work DURING regular business hours. We appreciate the opportunity to quote this job – Thank You! Please feel free to contact us with any questions. Contact: Andy R. Matovich 954-214-0848</p>		2,850.00	2,850.00

<p>TOTAL INCLUDES MATERIAL, INSURANCE AND LABOR.</p> <p>To accept our quote and authorize materials and/or services offered herein, please provide your Purchase Order Number and Signature of authorized representative.</p>	<p>Total \$2,850.00</p>
--	-----------------------------------