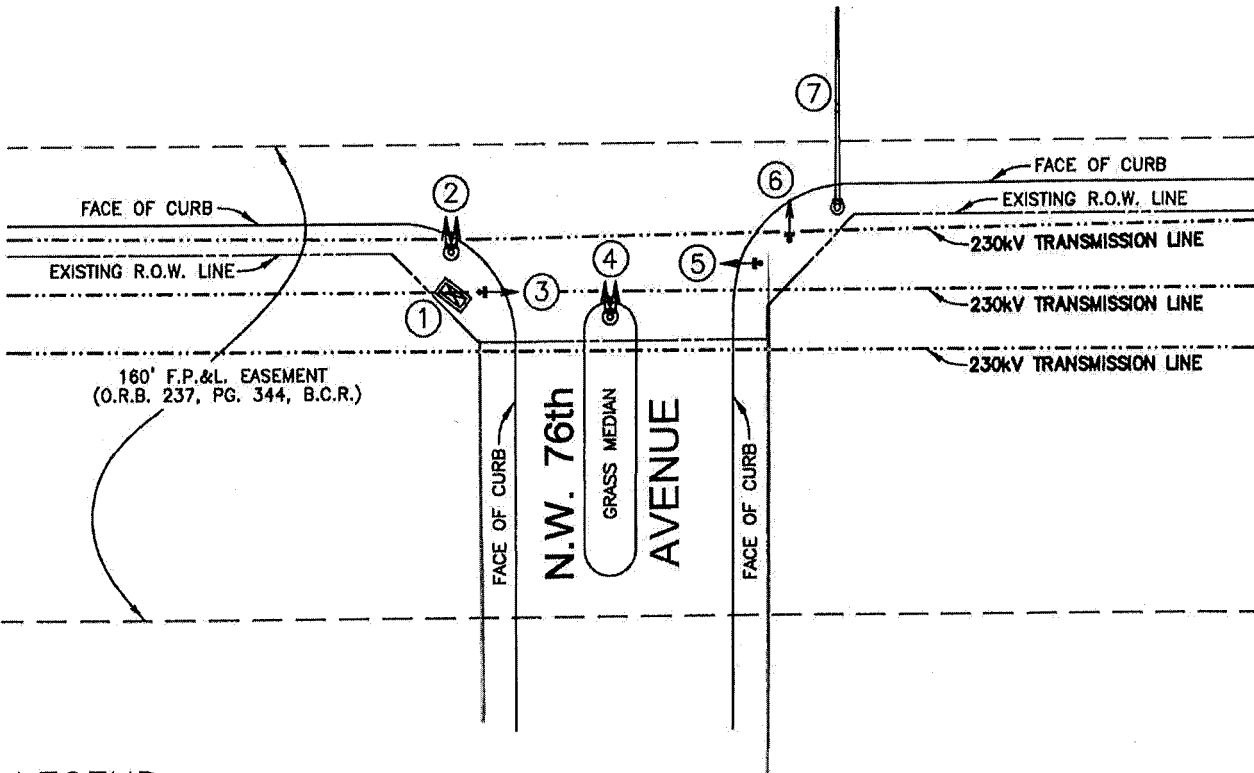
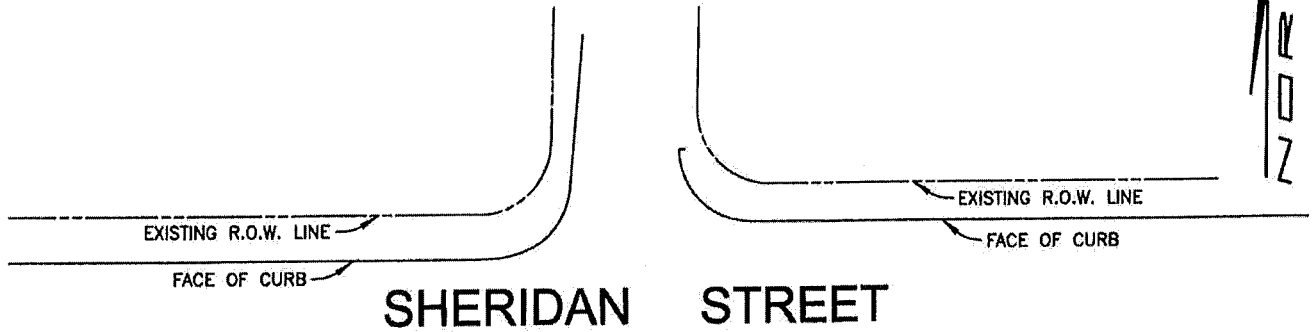


A portion of that certain Florida Power & Light Company Easement recorded in Official Records Book 237, Page 344 of the Public Records of Broward County, Florida; being a portion of Parcel "A" and Parcel "C", and a portion of Sheridan Street, all as shown on the plat of "WALNUT CREEK", according to the Plat thereof as recorded in Plat Book 167, Page 40, of the Public Records of Broward County, Florida.

SHEET 1 OF 1

SECTION 10, TOWNSHIP 51 SOUTH, RANGE 41 EAST



LEGEND

- ① CABINET
- ② PEDESTAL TRAFFIC SIGNAL
- ③ PEDESTRIAN SIGNAL
- ④ PEDESTAL TRAFFIC SIGNAL
- ⑤ PEDESTRIAN SIGNAL
- ⑥ PEDESTRIAN SIGNAL
- ⑦ MAST ARM AND UPRIGHT

3.		
2.		
1.		
DATE	REVISIONS	BY

Scale:	Drawn By:	Date:	Checked By:	Date:	File Location:
1" = 60'	JSH	01-20-15	F. Guillano	01-20-15	E:\RW\ROW\Parcel Sketches\Sheridan Street Mast Arm Exhibit\Exhibit 2.dwg