

EXHIBIT 2

RESOLUTION NO. 2014 -

A RESOLUTION OF THE BOARD OF COUNTY COMMISSIONERS OF BROWARD COUNTY TRANSMITTING A PROPOSED AMENDMENT TO THE BROWARD COUNTY NATURAL RESOURCE MAP SERIES OF THE BROWARD COUNTY COMPREHENSIVE PLAN TO DESIGNATED STATE AGENCIES; AND PROVIDING AN EFFECTIVE DATE.

WHEREAS, Broward County adopted the 1989 Broward County Comprehensive Plan on March 1, 1989 (the Plan); and

WHEREAS, the Department of Economic Opportunity has found the Broward County Comprehensive Plan in compliance with the Community Planning Act; and

WHEREAS, Broward County now wishes to propose an amendment to the Broward County Natural Resource Map Series of the Broward County Land Use Plan of the Broward County Comprehensive Plan; and

WHEREAS, the Planning Council, as the local planning agency for the Broward County Land Use Plan, held its hearing on May 22, 2014, with due public notice; and

WHEREAS, the Board of County Commissioners held its transmittal public hearing on August 12, 2014, at 2:00 p.m., having complied with the notice requirements specified in Subsection 163.3184(11), Florida Statutes, as amended, NOW, THEREFORE,

BE IT RESOLVED BY THE BOARD OF COUNTY COMMISSIONERS OF BROWARD COUNTY:

Section 1. The Board of County Commissioners hereby transmits to the Department of Economic Opportunity, South Florida Regional Planning Council, South

1 Florida Water Management District, Department of Environmental Protection,
2 Department of State, Department of Transportation, Fish and Wildlife Conservation
3 Commission, Department of Agriculture and Consumer Services, and Department of
4 Education, as applicable, for review and comment pursuant to Section 163.3184,
5 Florida Statutes, as amended, Amendment PCNRM 14-2, which is an update of the
6 Floodplains, Flood Prone Areas and Coastal High Hazard Area Map of the Broward
7 County Natural Resource Map Series of the Broward County Land Use Plan of the
8 Broward County Comprehensive Plan.

9 Section 2. The proposed amendment to the Broward County Comprehensive
10 Plan is attached as Exhibit "A" to this Resolution.

11 Section 3. EFFECTIVE DATE.

12 This Resolution shall become effective upon adoption.

13
14 ADOPTED this 12th day August, 2014.

15
16 Approved as to form and legal sufficiency:
Joni Armstrong Coffey, County Attorney

17
18 By /s/ Maite Azcoitia 06/10/14
19 Maite Azcoitia (date)
20 Deputy County Attorney

21 MA/gmb
22 06/10/14
23 #14-401.14
PCNRM14-2 Floodplains Map

EXHIBIT A

SECTION I
AMENDMENT REPORT
BROWARD COUNTY LAND USE PLAN
PROPOSED AMENDMENT PCNRM 14-2

(FLOODPLAINS, FLOOD PRONE AREAS AND COASTAL HIGH HAZARD AREA)

RECOMMENDATIONS/ACTIONS

DATE

I. Planning Council Staff Transmittal Recommendation

May 13, 2014

It is recommended that the proposed amendment to the Natural Resource Map Series – Eastern Broward County Floodplains and Flood Prone Areas and Coastal High Hazard Area Map be approved.

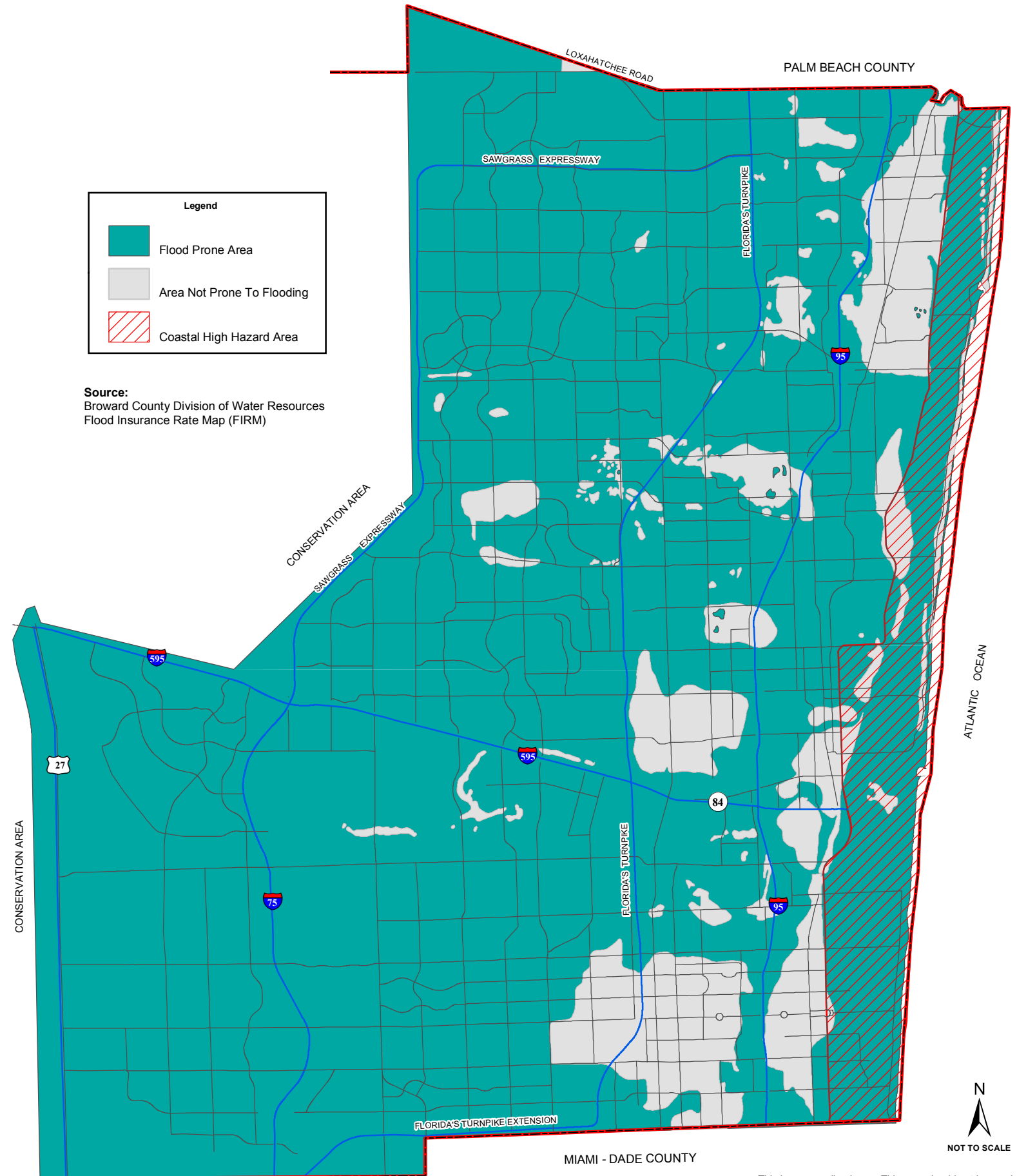
II. Planning Council Transmittal Recommendation

May 22, 2014

Approval per Planning Council staff transmittal recommendation. (Vote of the board; Unanimous: 17-0; Aronson, Bascombe, Blattner, Boccard, de Jesus, DuBose, Graham, Hobby, Kaplan, Kiar, Lazarow, Long, Mack, Ryan, Steffens, Stermer and Castro)

BROWARD COUNTY LAND USE PLAN

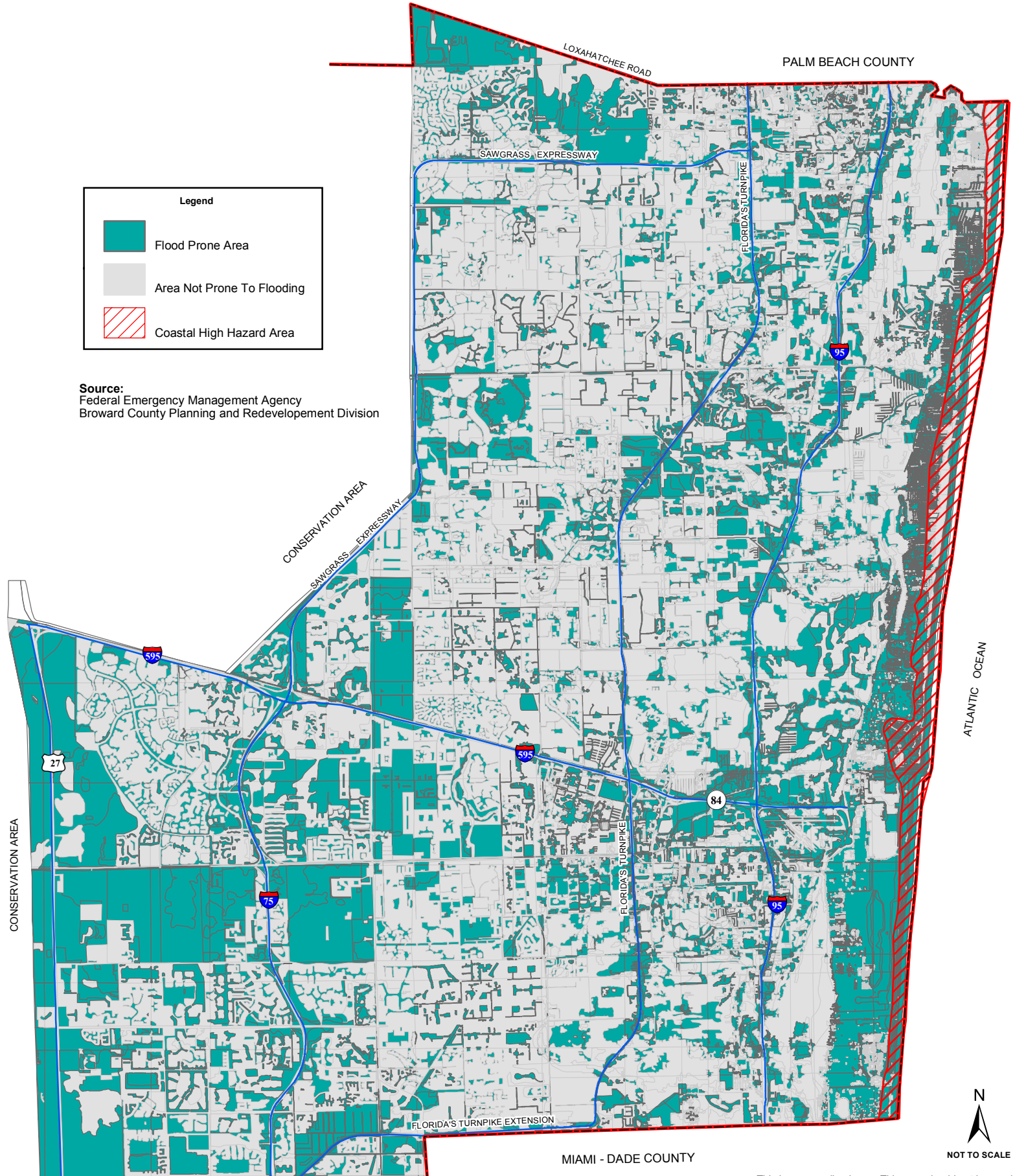
Current Floodplains, Flood Prone Areas and Coastal High Hazard Area



This is a generalized map. This map should not be used to determine parcel boundaries or limits of depicted items. Please contact the Broward County Planning Council office regarding questions pertaining to parcel boundaries or limits.

PCNRM 14-2 BROWARD COUNTY LAND USE PLAN

Proposed Floodplains, Flood Prone Areas and Coastal High Hazard Area



This is a generalized map. This map should not be used to determine parcel boundaries or limits of depicted items. Please contact the Broward County Planning Council office regarding questions pertaining to parcel boundaries or limits.