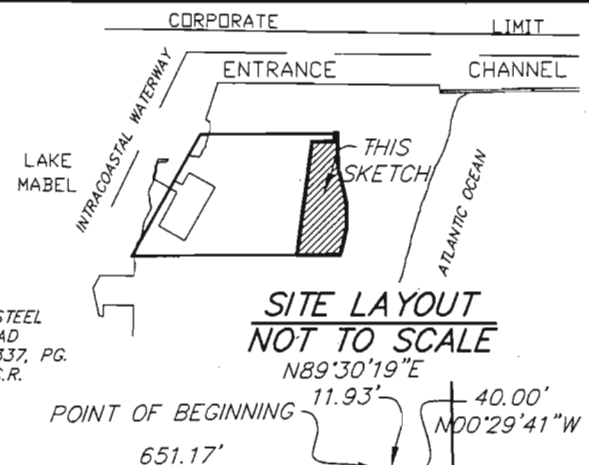
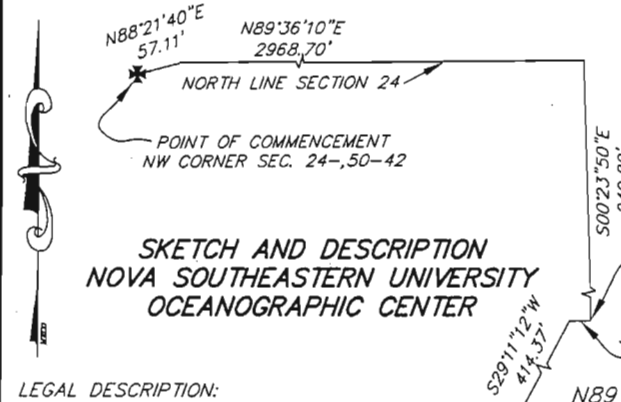
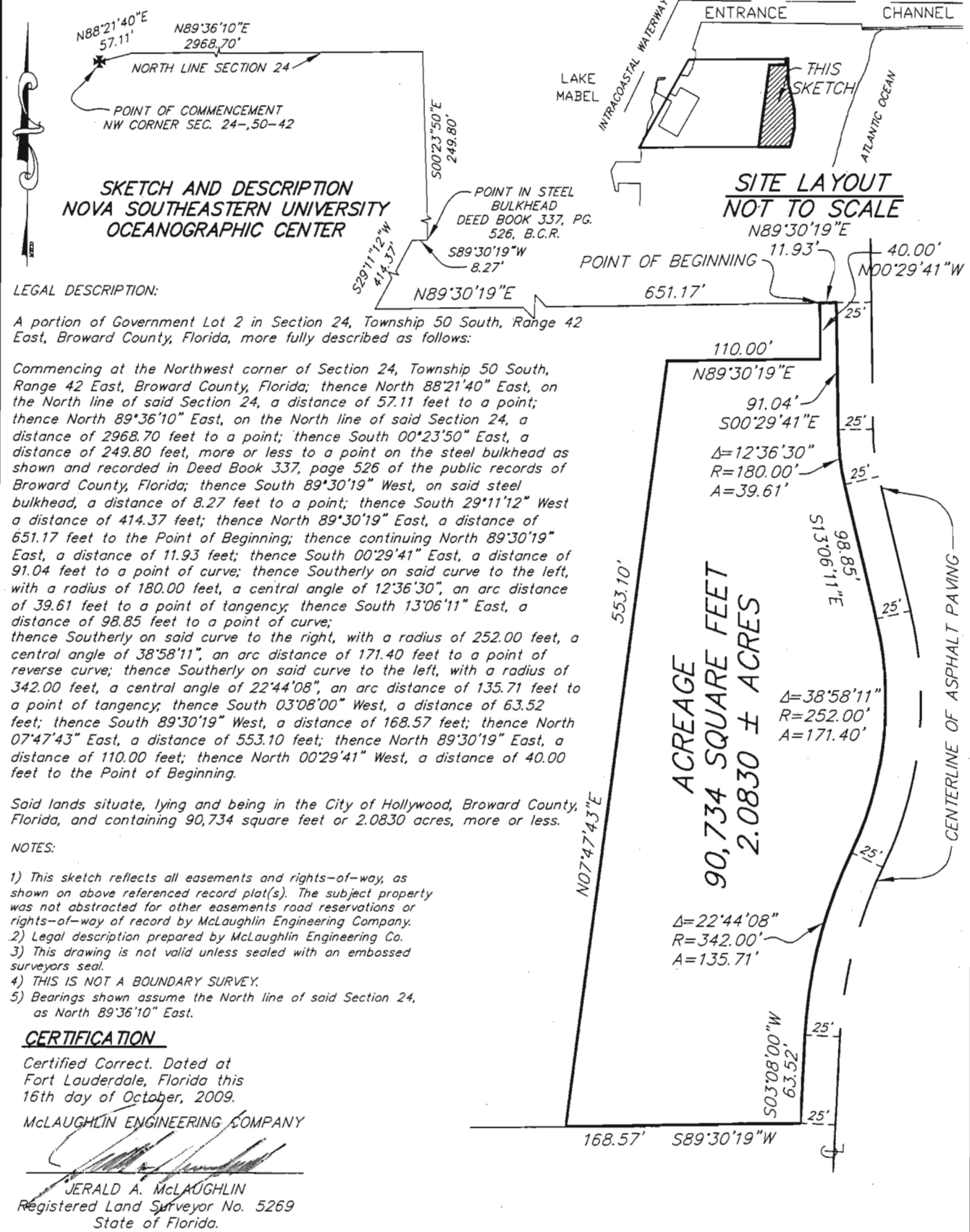




McLAUGHLIN ENGINEERING COMPANY
LB#285

ENGINEERING * SURVEYING * PLATTING * LAND PLANNING
 400 N.E. 3rd AVENUE FORT LAUDERDALE, FLORIDA 33301
 PHONE (954) 763-7611 * FAX (954) 763-7615

SCALE 1" = 100'



LEGAL DESCRIPTION:

A portion of Government Lot 2 in Section 24, Township 50 South, Range 42 East, Broward County, Florida, more fully described as follows:

Commencing at the Northwest corner of Section 24, Township 50 South, Range 42 East, Broward County, Florida; thence North 88°21'40" East, on the North line of said Section 24, a distance of 57.11 feet to a point; thence North 89°36'10" East, on the North line of said Section 24, a distance of 2968.70 feet to a point; thence South 00°23'50" East, a distance of 249.80 feet, more or less to a point on the steel bulkhead as shown and recorded in Deed Book 337, page 526 of the public records of Broward County, Florida; thence South 89°30'19" West, on said steel bulkhead, a distance of 8.27 feet to a point; thence South 29°11'12" West a distance of 414.37 feet; thence North 89°30'19" East, a distance of 651.17 feet to the Point of Beginning; thence continuing North 89°30'19" East, a distance of 11.93 feet; thence South 00°29'41" East, a distance of 91.04 feet to a point of curve; thence Southerly on said curve to the left, with a radius of 180.00 feet, a central angle of 12°36'30", an arc distance of 39.61 feet to a point of tangency; thence South 13°06'11" East, a distance of 98.85 feet to a point of curve; thence Southerly on said curve to the right, with a radius of 252.00 feet, a central angle of 38°58'11", an arc distance of 171.40 feet to a point of reverse curve; thence Southerly on said curve to the left, with a radius of 342.00 feet, a central angle of 22°44'08", an arc distance of 135.71 feet to a point of tangency; thence South 03°08'00" West, a distance of 63.52 feet; thence South 89°30'19" West, a distance of 168.57 feet; thence North 07°47'43" East, a distance of 553.10 feet; thence North 89°30'19" East, a distance of 110.00 feet; thence North 00°29'41" West, a distance of 40.00 feet to the Point of Beginning.

Said lands situate, lying and being in the City of Hollywood, Broward County, Florida, and containing 90,734 square feet or 2.0830 acres, more or less.

NOTES:

- 1) This sketch reflects all easements and rights-of-way, as shown on above referenced record plat(s). The subject property was not abstracted for other easements road reservations or rights-of-way of record by McLaughlin Engineering Company.
- 2) Legal description prepared by McLaughlin Engineering Co.
- 3) This drawing is not valid unless sealed with an embossed surveyors seal.
- 4) THIS IS NOT A BOUNDARY SURVEY.
- 5) Bearings shown assume the North line of said Section 24, as North 89°36'10" East.

CERTIFICATION

Certified Correct. Dated at Fort Lauderdale, Florida this 16th day of October, 2009.

McLAUGHLIN ENGINEERING COMPANY

JERALD A. McLAUGHLIN
 Registered Land Surveyor No. 5269
 State of Florida.

FIELD BOOK NO. _____
 JOB ORDER NO. U-5207, U-5478
 C: \JMMjr\2009\U5207 REF. DWG.: 00-3-131

DRAWN BY: JMMjr
 CHECKED BY: LCR Jr. / SAM